



Applying the Velocity Gradient Technique in NGC 1333: Comparison with Dust Polarization Observations

Archana Soam¹, Ka Ho Yuen², Ian Stephens³, Chi Yan Law^{4,5}, Ka Wai Ho^{2,6}, and Simon Coude^{3,7}

¹Indian Institute of Astrophysics, II Block, Koramangala, Bengaluru 560034, India; archana.soam@iiap.res.in

²Theoretical Division, Los Alamos National Laboratory, Los Alamos, NM 87545, USA; kyuen@lanl.gov

³Department of Earth, Environment, and Physics, Worcester State University, Worcester, MA 01602, USA

⁴Department of Earth and Space Sciences, Chalmers University of Technology, Gothenburg, Sweden

⁵European Southern Observatory, Karl-Schwarzschild-Strasse 2, D-85748 Garching, Germany

⁶Department of Astronomy, The University of Wisconsin-Madison, Madison, Wisconsin, WI 53706, USA

⁷Center for Astrophysics | Harvard & Smithsonian, 60 Garden Street, Cambridge, MA 02138, USA

Received 2024 April 23; revised 2024 September 26; accepted 2024 October 10; published 2024 November 27

Abstract

Magnetic fields (B -fields) are ubiquitous in the interstellar medium (ISM), and they play an essential role in the formation of molecular clouds and subsequent star formation. However, B -fields in interstellar environments remain challenging to measure, and their properties typically need to be inferred from dust polarization observations over multiple physical scales. In this work, we seek to use a recently proposed approach called the velocity gradient technique (VGT) to study B -fields in star-forming regions and compare the results with dust polarization observations in different wavelengths. The VGT is based on the anisotropic properties of eddies in magnetized turbulence to derive B -field properties in the ISM. We investigate that this technique is synergistic with dust polarimetry when applied to a turbulent diffused medium for the purpose of measuring its magnetization. Specifically, we use the VGT on molecular line data toward the NGC 1333 star-forming region (^{12}CO , ^{13}CO , C^{18}O , and N_2H^+), and we compare the derived B -field properties with those inferred from 214 and 850 μm dust polarization observations of the region using Stratospheric Observatory for Infrared Astronomy/High-Resolution Airborne Wide-band Camera Plus and James Clerk Maxwell Telescope/POL-2, respectively. We estimate both the inclination angle and the 3D Alfvénic Mach number M_A from the molecular line gradients. Crucially, testing this technique on gravitationally bound, dynamic, and turbulent regions, and comparing the results with those obtained from polarization observations at different wavelengths, such as the plane-of-sky field orientation, is an important test on the applicability of the VGT in various density regimes of the ISM. We in general do not find a close correlation between the velocity gradient inferred orientations and the dust inferred magnetic field orientations.

Unified Astronomy Thesaurus concepts: [Interstellar medium \(847\)](#); [Diffuse nebulae \(382\)](#); [Interstellar magnetic fields \(845\)](#)

1. Introduction

Magnetic fields (B -fields) have important roles in various astrophysical phenomena, such as regulating the evolution of large interstellar filamentary structures and their embedded cores (P. André et al. 2016), and the rate of star formation (e.g., P. S. Li et al. 2022). The gravitational stability of these cores, and thus their likelihood to host star formation, can be measured by comparing their magnetic, gravitational, and kinetic energy (see C. Federrath 2015). Recent magnetohydrodynamic (MHD) simulations (P. S. Li et al. 2018) suggest a complex evolutionary process with dense velocity coherent fibers collapsing into chains of cores, which resembles observations of molecular clouds (e.g., L1495; K. A. Marsh et al. 2016).

The decades-long accepted procedure of mapping B -fields using polarized dust emission has proven to be incredibly useful and productive over the years. The alignment of grains in the interstellar medium (ISM) has been found to result from a process called radiative alignment torques (e.g., A. Z. Dolginov & I. G. Mitrofanov 1976; A. Lazarian & T. Hoang 2007; B.-G. Andersson et al. 2015). This model predicts that the

observed polarization is due to asymmetric dust grains made to rotate due to radiative torques, thus aligning their shortest axes parallel to the ambient B -field. The polarized emission from these dust grains is therefore perpendicular to the B -field lines. Due to high dust extinction (optical/near-infrared) and low resolution (e.g., $5'$ with Planck), previous work on interstellar B -fields has been mostly limited to diffuse and/or nearby clouds, and only recently have additional studies started systematically probing denser filamentary infrared dark clouds (IRDCs) using (sub)millimeter polarization observations (e.g., T. Pillai et al. 2015; T. Liu et al. 2018; A. Soam et al. 2019; I. W. Stephens et al. 2022). The orientation of B -fields relative to interstellar density structures has been studied in different contexts, such as at galactic scales with Planck (J. D. Soler et al. 2013), or in selected Gould Belt molecular clouds (H.-b. Li et al. 2013). Theoretically, we expect lower-density structures that are not subject to strong gravitational collapse to be generally parallel to B -fields (J. D. Soler & P. Hennebelle 2017; K. H. Yuen & A. Lazarian 2017a). While dust polarization has been successful in mapping B -field structures in IRDCs, it would still be beneficial to have independent techniques available to confirm their derived magnetic properties.

The velocity gradient technique (VGT; see D. F. González-Casanova & A. Lazarian 2017; K. H. Yuen & A. Lazarian 2017a, 2017b; A. Lazarian & K. H. Yuen 2018a, 2018b) is a



Original content from this work may be used under the terms of the [Creative Commons Attribution 4.0 licence](#). Any further distribution of this work must maintain attribution to the author(s) and the title of the work, journal citation and DOI.

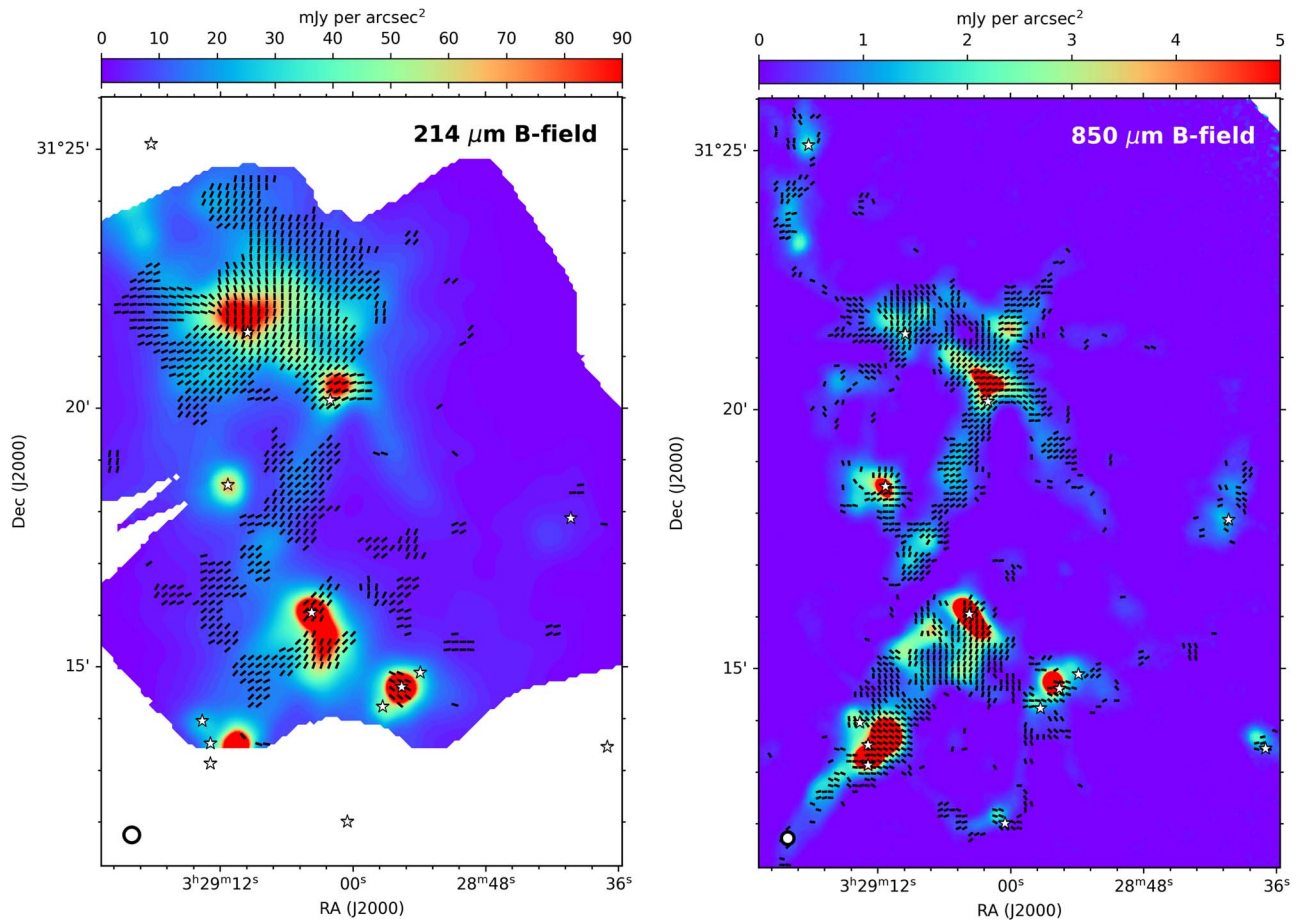


Figure 1. Left panel: the B -field morphology traced by the SOFIA/HAWC+ $214\ \mu\text{m}$ dust polarization observations of NGC 1333 plotted on the Stokes I total intensity map. The plotted line segments correspond to $P/\sigma_P > 3$, and only one in two vectors is plotted for clarity. Right panel: B -field map obtained from $850\ \mu\text{m}$ polarizations observations plotted on the Stokes I total intensity, as adapted from Y. Doi et al. (2020). Young stellar objects identified by G. Sandell & L. B. G. Knee (2001) are shown in both panels. The SOFIA/HAWC+ and the JCMT/POL-2 beam sizes are shown in the lower-left corner of their respective panels.

recently proposed method for estimating both the plane-of-sky B -field direction and strength in interstellar turbulent media. The technique is based on the fact that MHD turbulence tends to create anisotropic eddies along the local B -field directions (P. Goldreich & S. Sridhar 1995). In the classical sense, fluid motions perpendicular to B -field lines will tend to twist and tangle up the B -field lines without constant energy input. The concept of stochastic turbulent diffusion (A. Lazarian & E. T. Vishniac 1999) allows fluid parcels with a pinched B -field to rotate perpendicular to the mean B -field direction without the field lines entangling. Therefore, a high-resolution position–position–velocity (PPV) cube of spectral line observations can be used to estimate the B -field orientation in a region (K. H. Yuen et al. 2023a). The VGT has already been used to study B -field orientations in comparison with polarization observations in diffuse gas (e.g., HI: K. H. Yuen & A. Lazarian 2017a, CO: A. Lazarian & K. H. Yuen 2018a, Smith cloud, Y. Hu et al. 2019a). Studies show that the B -field directions as determined by the VGT method and Planck data have a strong correlation (Y. Hu et al. 2019c). However, the velocity and B -field structures in high-density regions may be complicated by other factors, such as infall and outflows. Therefore, a question persists on the applicability of VGT on smaller-scale, denser regions. Can we predict the orientation of B -fields on these scales using PPV cubes, and will these orientations match with the ones mapped

from polarization observations? Are velocity gradients aligned with B -field orientation in a gravitationally collapsing region, which is opposite to what is seen in diffuse elongated structures?

To address these questions, we chose to analyze the filamentary region NGC 1333 in the Perseus molecular cloud, which is located ~ 300 pc from the Sun (C. Zucker et al. 2018). The magnetic properties in NGC 1333 were previously studied with dust polarization measurements from the B -Fields in the Star-forming Region Observations (BISTRO) survey using the James Clerk Maxwell Telescope (JCMT; Y. Doi et al. 2020). In this work, we complement the available published BISTRO observations in the submillimeter ($850\ \mu\text{m}$) with our far-infrared ($214\ \mu\text{m}$) dust polarization measurements using the Stratospheric Observatory for Infrared Astronomy (SOFIA). Figure 1 shows the derived plane-of-sky B -field maps for each data set. We also use molecular line observations such as ^{12}CO , ^{13}CO , C^{18}O , and N_2H^+ from the JCMT and CARMA archives to compute velocity gradients.

This paper is organized as follows: in Section 2, we describe the polarimetric and spectroscopic observations; in Section 3, we present the analysis using the VGT and gradient statistics; in Sections 4 and 5, we present our results and calculations of various parameters; in Section 6, we discuss the significance of our findings, and finally in Section 7, we conclude our work.

Table 1
Summary of the Observed Data Used in This Work

Telescope	Species	Transition	λ/ν $\mu\text{m}/\text{GHz}$	FWHM _{beam} ($''$)	References
Molecular emissions					
JCMT/HARP	^{12}CO	$J = 3-2$	345.796 GHz	14 $''$ 2	(1)
	^{13}CO		330.587 GHz		
	C^{18}O		329.331 GHz		
CARMA	N_2H^+	$J = 1-0$	93.174	7 $''$ 2 \times 5 $''$ 4	(2)
Dust polarization					
SOFIA/HAWC+			214	18 $''$ 2	(3)
JCMT/POL-2			850	14 $''$ 2	(4)

References. (1) Archival data ID: M06BGT02 (PI: Richard, Hills). (2) CLASSy: S. Storm et al. (2014). (3) SOFIA proposal ID: 06_0098 (PI: Stephen, Ian). (4) Y. Doi et al. (2020).

2. Data Acquisition and Reduction

2.1. Dust Polarization at 214 μm with the High-Resolution Airborne Wide-band Camera Plus

We observed NGC 1333 with the High-Resolution Airborne Wide-band Camera Plus (HAWC+) of SOFIA on flights 507 (2018/09/20) and 511 (2018/09/27) under SOFIA program 06_0098 (PI: Ian Stephens). SOFIA was an airborne observatory equipped with a 2.5 m primary mirror and jointly operated by the National Aeronautics and Space Administration (NASA) and the German Aerospace Center (DLR) from 2010 to 2022. HAWC+ is a far-infrared polarimetric camera capable of measuring the polarized thermal emission of interstellar dust at 54, 89, 154, and 214 μm (D. A. Harper et al. 2018). Specifically, we targeted four fields in NGC 1333 with HAWC+ in Band *E* polarization (214 μm) while using a chop-nod imaging mode. This mode uses the secondary mirror of SOFIA’s telescope array to alternate, or “chop,” at a frequency of 10.2 Hz between an “on” and an “off” position separated, in this case, by 8' to remove the background emission due to the atmosphere. The telescope array itself alternates between two “nod” positions found symmetrically at a distance of 4' around the “on” source (or 8' from each other), thus creating two distinct “off” positions for chopping (D. A. Harper et al. 2018). The beam size of HAWC+ at 214 μm is 18 $''$ 2, or 5460 au at the distance of NGC 1333 at 300 pc.

Polarization observations with HAWC+ are obtained from sets of four measurements taken with different half-wave plate positions (5 $^\circ$ 0, 50 $^\circ$ 0, 27 $^\circ$ 5, and 72 $^\circ$ 5; see D. A. Harper et al. 2018). These raw data files (Level 0) were downloaded from NASA’s Infrared Science Archive and were then reduced and mosaicked into the final (Level 4) data product in 2023 July using the default parameters of the SOFIA Data Reduction software (SOFIA Redux version 1.3.0; M. Clarke & R. V. Vliet 2023). This Level 4 data product has a pixel size of 4 $''$ 55, and it contains the measured Stokes *I*, *Q*, and *U* parameters, as well as derived quantities such as the debiased polarization intensity I_p , the debiased polarization fraction P , and the rotation angle θ_p . The calculations for these quantities and their uncertainties are described in detail by M. S. Gordon et al. (2018) and M. Clarke & R. V. Vliet (2023).

2.2. Dust Polarization at 850 μm with POL-2

We use published 850 μm dust polarization observations of NGC 1333 with POL-2 at the JCMT (Y. Doi et al. 2020), which were originally acquired for the *B*-fields In STar-forming Region Observations (BISTRO) survey (D. Ward-Thompson et al. 2017). POL-2 is the polarimeter installed in front of the Submillimetre Common-User Bolometer Array Two (SCUBA-2), and it consists of a rotating half-wave plate and a polarizing grid (P. Friberg et al. 2016). SCUBA-2 is a 10,000 pixels bolometer array capable of simultaneous observing at 450 and 850 μm (W. S. Holland et al. 2013). The 15 m dish of the JCMT provides SCUBA-2 with an effective resolution of 14 $''$ 1 (i.e., 4200 au at the distance of NGC 1333 at 300 pc) at 850 μm (J. T. Dempsey et al. 2013). The details of the observations are given in Table 1.

These 850 μm polarization measurements of NGC 1333 with POL-2 were obtained in scan mode using a 11' wide POLCV_{DAISY} pattern toward two partially overlapping pointings. The observations were acquired at a scanning speed of 8 $''$ s $^{-1}$ and a data sampling rate of 200 Hz while the half-wave plate rotated at a frequency of 2 Hz. The data were reduced in November 2018 (see Y. Doi et al. 2020, for details) using the software package STARLINK (M. J. Currie et al. 2014), and specifically the procedure *pol2map*, which is a variation on the script *makemap* (E. L. Chapin et al. 2013). The Stokes *I*, *Q*, and *U* parameters and their variances were initially produced on a grid of 4 $''$ pixels, and subsequently resampled to a 7 $''$ grid. These observations were used to make a quantitative comparison of *B*-fields with geometries obtained from VGT using the N_2H^+ line.

2.3. Molecular Line Data

For the velocity gradient analysis, we use ^{12}CO (3–2), ^{13}CO (3–2), and C^{18}O (3–2) data from the JCMT science archive.⁸ NGC 1333 was observed in 2007 under program ID M06BGT02 (PI: Richard Hills) using the Heterodyne Array Receiver Program (HARP) instrument.

We also use N_2H^+ (1-0) observations from Combined Array for Research in Millimeter-wave Astronomy (CARMA) via the CARMA Large Area Star formation Survey (CLASSy; S. Storm et al. 2014). This survey used CARMA to

⁸ Data can be accessed at <https://www.cadc-ccda.hia-ihp.nrc-cnrc.gc.ca/>.

simultaneously observe protostellar regions with both total power (single dish) and interferometric modes to achieve high-resolution images that allow for the full recovery of large-scale emission. In this survey, 800 arcmin^2 of the Perseus and Serpens molecular clouds were observed with CARMA, including the NGC 1333 region studied in this work. These data were originally presented in A. Dhabal et al. (2018, 2019) and were shared with us by the CLASSy team via private communication. The resolution of the observations is $7''.2 \times 5''.4$ ($2160 \text{ au} \times 1620 \text{ au}$ at the distance of NGC 1333).

3. Method and Analysis

The main purpose of this work is to calibrate the VGT using dust polarization measurements. First, we provide a synoptic review of the basis of the VGT and its development in light of recent theoretical findings. This synoptic review will motivate the application of the technique for this paper. The acronyms which will be used in the following sections are defined in Table 3 given in the Appendix.

3.1. VGT and the Gradient Statistics

The VGT was first proposed by D. F. González-Casanova & A. Lazarian (2017) to study the statistical correlation between gradients of synthetic observables and B -field orientations. They numerically found that the gradients of column density and velocity centroid in synthetic observations from triply periodic isothermal compressible MHD simulations are statistically perpendicular to those of the B -field. This statistical study presents similarities to the earlier work from J. D. Soler et al. (2013), where the latter found that the intensity gradients are statistically correlated to the B -field in the low column density limit. However, neither J. D. Soler et al. (2013) nor D. F. González-Casanova & A. Lazarian (2017) could make predictions on B -field orientations since they compared the statistical properties between the gradients of a certain observable to the B -field only in a global sense.

D. F. González-Casanova & A. Lazarian (2017) suggested that the reason why both velocity centroid and column density gradients are correlated to the B -field orientation is due to the presence of Goldreich–Sridhar turbulence (P. Goldreich & S. Sridhar 1995). In the case of strong turbulence (see S. Zhao et al. 2023 for the difference between weak and strong turbulence), Alfvénic turbulent eddies are anisotropic and scale-dependent (J. Cho & A. Lazarian 2002). Pictorially, the turbulent eddies are ellipsoids with their major axes aligned to the local direction of the B -field (J. Cho & E. T. Vishniac 2000). A later study (J. Cho & A. Lazarian 2003; K. D. Makwana & H. Yan 2020) found that the anisotropy of turbulent eddies is also present for slow magnetosonic modes, and more importantly, Alfvén and slow modes occupy the majority of the turbulent energy in the ISM (H. Zhang et al. 2020).

The locality property of MHD turbulence opens up an opportunity to map B -field orientations in a smaller region, and potentially an orientation distribution rather than a global average. Indeed, K. H. Yuen & A. Lazarian (2017a) proposed a criterion to map B -field orientation via statistical properties of velocity centroid gradients: when the sampling area is “sufficiently” large, the orientation histogram of velocity centroid gradients coincides with that of B -field directions. The peak of the velocity centroid gradients orientation histogram is therefore a measure of the B -field orientation in

the sampling area, with an offset of 90° . The actual theoretical meaning of being “sufficient” in statistics is later explored in A. Lazarian & K. H. Yuen (2018a); in summary, the length scale that makes two orientation histograms similar corresponds to the turbulent correlation length scale. Most importantly, K. H. Yuen & A. Lazarian (2017a) found numerically that the condition for sufficient sampling is reached when the orientation histogram of velocity centroid gradients is Gaussian-like (see Section 3.2 for issues related to the Gaussianity of gradient orientations). That means one could determine the minimal size of sampling by simply inspecting the shape of the gradient orientation histogram, opening a new way of mapping B -field directions without the need for polarization observations.

Subsequent publications after K. H. Yuen & A. Lazarian (2017a) follow two strategies of development. (i) The orientation histogram contains more information than just the peak of the distribution. For instance, the dispersion of the histogram gives the Alfvénic Mach number (A. Lazarian et al. 2018), and the amplitude of the histogram gives the sonic Mach number (K. H. Yuen & A. Lazarian 2020a). (ii) There are observables other than the gradients of velocity centroid or column density that better trace B -fields (K. H. Yuen & A. Lazarian 2017b; A. Lazarian & K. H. Yuen 2018a, 2018b). All these techniques are used in Y. Hu et al. (2019c), where the B -field orientation of a background high-velocity cloud Smith Cloud is predicted by the technique.

3.2. Updates to the Gradient Theory

3.2.1. The Correction from the Gaussianity Condition (K. H. Yuen & A. Lazarian 2017a)

The most recent theoretical update on the VGT is based on the statistical properties of two-point correlation or structure functions (Z. Lu et al. 2020; A. Lazarian et al. 2024; see also A. Lazarian & D. Pogoyan 2000, 2004, 2012, 2016; D. Kandel et al. 2016, 2017; A. Lazarian et al. 2022),⁹ which attempted to explain the empirical findings that the gradient orientation histogram of a velocity-related observable is statistically Gaussian (K. H. Yuen & A. Lazarian 2017a) when the Alfvén Mach number M_A is small. Z. Lu et al. (2020) pointed out that the gradient orientation distribution is not Gaussian when $M_A \sim 1$, but rather a special function predicted by the turbulence statistics theory. The use of Gaussians in the $M_A \sim 1$ case will lead to an underestimate of both Alfvénic Mach number¹⁰ and polarization fraction.

⁹ We, however, acknowledge that the two-point statistical theory does not represent all of the MHD fluctuations in the sky. It is found in Z. Gan et al. (2022), S. Zhao et al. (2023) that a significant amount of MHD fluctuations are actually not the three MHD modes, but rather some nonlinear fluctuations called “non-waves.” K. H. Yuen et al. (2023b) discussed the origin of this issue and gave the close form two-point theory that can be used under the framework of A. Lazarian & D. Pogoyan (2012). However, how the emergence of non-waves changes our predictions, particularly the gradient technique is still a subject of active research. See K. H. Yuen et al. (2023b).

¹⁰ We do not suggest that the numerical finding from A. Lazarian et al. (2018) and the applications thereafter are incorrect. From a theoretical point of view, the fitting from A. Lazarian et al. (2018) could not be explained by the statistical theory of MHD turbulence, nor is it further explained via the classical representations of MHD turbulence. Another theoretical approach, albeit being more constrained in terms of applications, is the curvature estimation from K. H. Yuen & A. Lazarian (2020b). When applying the techniques of velocity gradients, readers should clearly understand whether the technique is theoretically or empirically founded.

A. Lazarian et al. (2024) provided a first-principles theoretical analysis of how the directions of the B -field predicted by the gradient technique $\tilde{\theta}_B$ and the magnetization $M_A = \sin \gamma \sqrt{-\log(J_2)/2}$ are given by the gradient orientation histogram. The theoretical distribution of gradient orientation for any 2D observables is given by (Z. Lu et al. 2020)

$$P(\theta_p) = \frac{1}{\pi} \times \frac{\sqrt{1 - J_2}}{1 - \sqrt{J_2} \cos 2(\tilde{\theta}_B - \theta_p)}. \quad (1)$$

This distribution function has two parameters: J_2 and $\tilde{\theta}_B$. The first is the rotation-invariant ratio of the determinant of the traceless part of the covariance matrix and half of the trace of the covariance, which is

$$J_2 \equiv \frac{(\tilde{\sigma}_{xx} - \tilde{\sigma}_{yy})^2 + 4\tilde{\sigma}_{xy}^2}{(\tilde{\sigma}_{xx} + \tilde{\sigma}_{yy})^2}, \quad (2)$$

where $\tilde{\sigma}_{xx} = \langle \partial_x C \partial_x C \rangle$, $\tilde{\sigma}_{xy} = \langle \partial_x C \partial_y C \rangle$, and $\tilde{\sigma}_{yy} = \langle \partial_y C \partial_y C \rangle$ for any 2D observable C (C can be column density, velocity centroid, velocity channel, or velocity caustics, i.e., velocity fluctuations arise from velocity channels by setting the 3D density to be constant, see A. Lazarian & D. Pogosyan 2000 and Section 3.3). The prediction of the B -field (offset by 90° from gradient orientations, D. F. González-Casanova & A. Lazarian 2017; K. H. Yuen & A. Lazarian 2017a) and exceptional cases¹¹ by the gradient technique are given by

$$\tan 2\tilde{\theta}_B \equiv \frac{2\tilde{\sigma}_{xy}}{\tilde{\sigma}_{xx} - \tilde{\sigma}_{yy}}. \quad (3)$$

The applications of the statistical theory of MHD turbulence naturally prohibit the use of any ‘‘alignment measure improvement’’ techniques (see, e.g., A. Lazarian & K. H. Yuen 2018a; Y. Hu et al. 2019c). The deviations of the gradients from the B -field are an intrinsic feature rather than noise or errors in the context of MHD theory (A. Lazarian et al. 2022, 2024). For example, the alignment measure itself, defined as $\langle \cos 2\Delta\phi \rangle$, where $\Delta\phi$ is the difference between the actual and the gradient-predicted B -field orientations (D. F. González-Casanova & A. Lazarian 2017; K. H. Yuen & A. Lazarian 2017a), is actually a function of M_A and predicted from theory (A. Lazarian & K. H. Yuen 2018a). Moreover, further smoothing or toggling of the statistics will cause the prediction of the B -field properties to significantly diverge from the theoretical predictions (A. Lazarian et al. 2024).

For the sake of this work, we will revert the gradient technique to the case where we can describe it exactly with the turbulence statistical theory without the use of unsolicited parameters (N. Filippova et al. 2024, in preparation). Moreover, A. Lazarian et al. (2024) also discussed that the gradient statistics can only be used in the K. H. Yuen & A. Lazarian (2017a) form for the estimation of the B -field strength.

¹¹ Gradients of 2D operators are not statistically necessarily perpendicular to the local B -field. For instance, gravity tends to turn the gradients of 2D observables to be parallel to the B -field, with density observables being more sensitive than velocity observables (K. H. Yuen & A. Lazarian 2017b; Y. Hu et al. 2020). Fast modes in certain orientations also exhibit similar behavior (A. Lazarian & K. H. Yuen 2018a).

3.2.2. Retrieving Velocity Anisotropy from Velocity Caustics

Caution needs to be taken on the choice of observables. The earlier development of the gradient technique focused on the statistical mean of both column density and velocity centroid gradients (K. H. Yuen & A. Lazarian 2017a, 2017b). However, from the perspective of MHD turbulence theory, density anisotropy can be very different from that of velocity, particularly in the case of low plasma β media. For instance, density features are preferentially perpendicular to the B -field directions when the sonic Mach number is larger than 1. Velocity anisotropy in this regime is still preferentially parallel to the B -field (G. Kowal & A. Lazarian 2010). The separation of density and velocity fluctuations is therefore crucial for accurately predicting the direction of the B -field since column density provides only density fluctuations, while the velocity centroid provides both density and velocity fluctuations even after normalization (D. Kandel et al. 2016).

A. Lazarian & D. Pogosyan (2000) developed the theory relating the statistics of spectroscopic intensity fluctuations in PPV space to statistical fluctuations of density and turbulent velocities. This theory describes the emergence of intensity fluctuations in PPV space due to velocity crowding, which are analytically studied by K. H. Yuen et al. (2021). Historically, A. Lazarian & D. Pogosyan (2004) termed the concept of velocity caustics only in the absence of thermal broadening. This concept of velocity caustics in PPV was used by A. Lazarian & D. Pogosyan (2000) to denote the effect of velocity crowding due to multiple turbulent velocities along the line of sight. Due to this effect, the atoms that are at different physical positions along the same line of sight happen to overlap when viewed in PPV space. One of the most important consequences of the effect of velocity caustics is the creation of PPV intensity structures that are independent of the true density structures in 3D. As a result, there are nonzero PPV intensity fluctuations in spectroscopic data even from incompressible turbulence or in observational maps unrelated to velocity fluctuations. The ability to retrieve velocity caustics from observations would therefore provide a pathway to tracing velocity anisotropy in the sky, and thus better trace B -fields in interstellar media.

A careful investigation of velocity channel maps suggests that velocity fluctuations indeed exist, albeit they could be subdominant compared to density fluctuations in velocity channels (K. H. Yuen et al. 2021). For our analysis of NGC 1333, we shall assume the turbulence is in an isothermal equilibrium state with the influence of gravity (see, e.g., K. H. Yuen & A. Lazarian 2017b; A. Lazarian & K. H. Yuen 2018a; Y. Hu et al. 2020) and outflows (I. W. Stephens et al. 2017). In the current work, we follow the K. H. Yuen et al. (2021) recipe and compute the gradients of pure velocity fluctuations.

3.2.3. Differences in Line-of-sight Summations between Gradients and Polarization

There is an additional disparity in how the gradient-predicted B -field vectors on each channel are added up along the line of sight. Intrinsically, Stokes parameters collect B -field fluctuations in a quadratic fashion ($(Q, U) \propto \int n_{\text{dust}}(\cos, \sin)(2\theta)$), while B -field directions from VGT are added up linearly ($(Q, U)_{\text{VGT}} \propto \int n_{\text{dust}}(\cos, \sin)(\theta)$) (A. Lazarian & K. H. Yuen 2018a). The addition of predicted B -field vectors by mimicking the addition of Stokes parameters is technically equivalent to a

low-pass filter on the B -field statistics along the line of sight (see A. Lazarian et al. 2024 for a dedicated discussion). We will therefore restrain our gradient analysis to individual velocity channels.

3.3. Applying the VGT

Here, we describe the different techniques that we apply to the velocity cubes for the VGT analysis.

Gradient Distributions and Block Averaging. Gradients were calculated following the procedures described in K. H. Yuen & A. Lazarian (2017a, 2017b) and improved by Z. Lu et al. (2020), including the gradient calculation method and the sub-block averaging, i.e., (i) divide the whole map into sub-blocks; (ii) compute the gradient orientation histogram within each sub-block, and (iii) estimate the B -field orientation within each sub-block. The sub-block averaging method is designed to define the most probable B -field direction within a block, which is a chosen 2D region with a definite size, by a local Gaussian-/Lu et al.-type fitting peak on the distribution of the gradient angle distribution. The use of sub-blocks increases the signal to noise of the gradients at the cost of spatial resolution of the spectral line observations. The uncertainties on the fit can provide a quantitative estimate of whether the block size is large enough to provide the probable direction. Here, we select a block size of 30×30 pixels (on a ^{12}CO map) for our analysis. This corresponds to 7.1×7.1 or $0.6 \text{ pc} \times 0.6 \text{ pc}$ at a distance of 300 pc of NGC 1333. The estimated direction of the B -field is then obtained by adding $\pi/2$ (90°) to each block-averaged channel gradient vector (D. F. González-Casanova & A. Lazarian 2017; K. H. Yuen & A. Lazarian 2017a).

Velocity Channels and Centroids as Observables. The channel intensity p , including the thermal broadening effect, is given by

$$p(\mathbf{X}, v_0, \Delta v) = \int_{v_0 - \Delta v/2}^{v_0 + \Delta v/2} dv \tilde{p}(\mathbf{X}, v) \times \left(\frac{m}{2\pi k_B T(\mathbf{X}, v)} \right)^{1/2} e^{-\frac{mv^2}{2kT(\mathbf{X}, v)}}, \quad (4)$$

where the sky position is described by the 2D vector $\mathbf{X} = (x, y)$, the line-of-sight velocity v_0 , and the channel width Δv (See Table 3 in the Appendix for the definition for the rest of the symbols). The first moment of the integral of p along the velocity axis, called the velocity centroid $C = \int dv v p(\mathbf{X}, v)$, is also found to be an observable that is more velocity dominant (i.e., velocity fluctuations dominate over density fluctuations in terms of the standard deviation, see A. Esquivel & A. Lazarian 2005, 2010; K. H. Yuen & A. Lazarian 2017a; K. H. Yuen et al. 2021).

The Velocity Decomposition Algorithm (VDA) for Subsonic Turbulence. As mentioned in Section 3.2.2, the gradient technique was originally designed for velocity-dependent observables, i.e., variables that are directly influenced by the velocity fluctuations along the line of sight. K. H. Yuen et al. (2021) discussed that there is a way of reconstructing the velocity caustics p_v from each channel based on the linear algebra formalism. This formalism is known to work in subsonic media, and in supersonic media to an extent (K. H. Yuen et al. 2021). To summarize, the density fluctuations p_d and velocity caustics p_v can be obtained from the following formulae using the full PPV cube $p(\mathbf{R}, v)$ and the

column density map $I(\mathbf{R})$, where $\langle p \rangle_{\mathbf{X} \in A}$ represents the velocity channel averaged over a certain spatial area A :

$$\begin{aligned} p_v &= p - (\langle pI \rangle - \langle p \rangle \langle I \rangle) \frac{I - \langle I \rangle}{\sigma_I^2} \\ p_d &= p - p_v \\ &= (\langle pI \rangle - \langle p \rangle \langle I \rangle) \frac{I - \langle I \rangle}{\sigma_I^2}. \end{aligned} \quad (5)$$

Magnetization from J_2 . The magnetization of velocity gradients (A. Lazarian et al. 2024) is given by

$$M_A = \sin \gamma \sqrt{-\log(J_2)/2}, \quad (6)$$

where J_2 is a parameter similar to the circular variance obtained from fitting the histogram of gradient orientations via Equation (1), while γ is the independently measured angle between the B -field direction and the line of sight, e.g., via K. H. Yuen et al. (2023c) and S. Malik et al. (2023) (See Section 5). This formula is exact for pure Alfvén fluctuations on velocity centroids, and it is justified to extend it to general MHD fluctuations and other velocity observables as given in A. Lazarian et al. (2024).

4. Results

In this section, we present the results from applying the VGT described in Section 3.3 on NGC 1333. Based on all the available observations, there are three regions that show noticeably different B -field and velocity properties. As such, in our analysis, we separate the map into three subregions: the Hinge, the Blob, and the Filament (see Figure 2).

4.1. Choice of Velocity Channel Positions

For our analysis, we first focus on the case of the ^{12}CO spectral line, which is the spectral line detected over the largest spatial extent and which suffers more from absorption effects unless the density is very low (see, e.g., C.-H. Hsieh et al. 2019; Y. Hu et al. 2019b). We note that absorption does not appear to be strong in NGC 1333 according to the channel maps of ^{12}CO , ^{13}CO , and C^{18}O . To proceed, we apply the VDA and plot the ^{12}CO velocity caustics for the three separate regions. As seen in Figure 3, the three regions show clear differences in their velocity statistics. Notably, the Filament region has no fluctuations in the velocity caustics at $\sim 10 \text{ km s}^{-1}$. Notice that the concept of velocity caustics (K. H. Yuen et al. 2021) predicts the emergence of the “double-peak” spectral line, which is a unique feature of the fluctuations of the velocity caustics along the velocity axis. The velocity caustics tend to be crowded at the velocity position $|v - v_{\text{peak}}| \sim 1.06 \sigma_{\text{turb}}$, where σ_{turb} is the turbulent velocity dispersion. The appearance of this double-peak feature is therefore a signature of a dominant turbulence system (K. H. Yuen et al. 2021). This also indicates that the Filament region may have some other mechanisms dominating the contribution due to turbulence, e.g., gravity or outflows (I. W. Stephens et al. 2017).

According to the recipe provided by K. H. Yuen et al. (2021), the velocity positions that correspond to the peaks of the velocity caustics of the spectral line (Figure 3) are preferred as the input for the gradient technique calculations. For our gradient analysis, we take these to be 5.58 and 8.9 km s^{-1} , which correspond to the double peaks of the spectral lines of

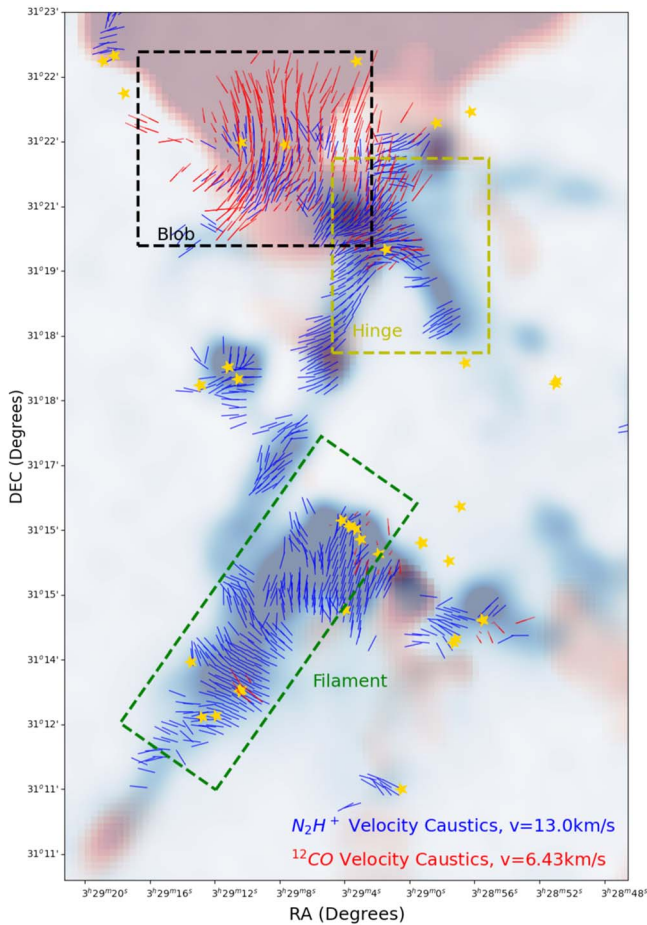


Figure 2. The image shows the maps of the N_2H^+ and ^{12}CO velocity caustics in blue and red shades, respectively. Classification of regions studied in this paper are also identified and labeled.

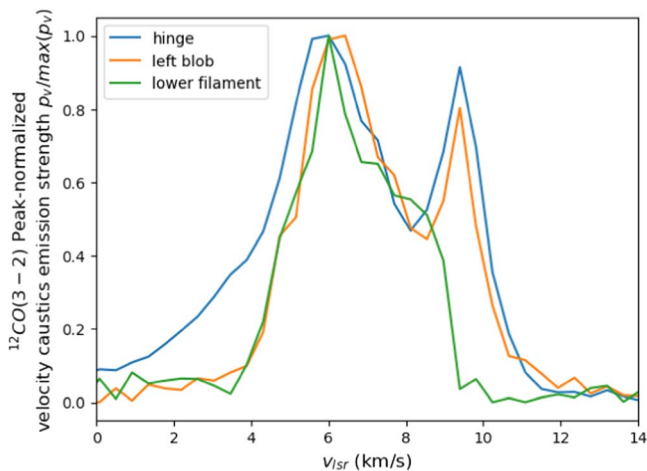


Figure 3. Peak-normalized ^{12}CO spectral line in the form of velocity caustics for the three separate regions. Hinge: blue; Blob: orange; Filament: green, as shown in Figure 2.

both the Hinge and Blob velocity caustics, and 7.28 km s^{-1} , which corresponds to the spectral peak. Figure 4 shows the predicted B -field morphology (computed via velocity caustics) for these three selected velocity channels. Similar to Figure 3, we note that the channel maps display differences between velocities and species.

4.2. Plane-of-sky B -field Orientation from the VGT

We plot the B -field predicted by the VGT using data from both ^{12}CO (Figures 4 and 5) and N_2H^+ (Figure 5). To obtain these figures, we: (1) compute gradients from velocity caustics according to the recipe outlined in Section 3.3, (2) produce the B -field map using the line integral convolution (LIC; B. Cabral & L. C. Leedom 1993) implemented natively in Julia (see A. Lazarian & K. H. Yuen 2018a) with its parameter set to 200 vectors, and (3) scale the output by the velocity channel intensity. Notably, Figure 4 shows that the predicted B -field directions can vary depending on the velocity channel used for the VGT. We then compare our gradient output with the polarization measurements at 214 and $850 \mu\text{m}$, with the former restricted to the Blob region only. Our analysis will mostly focus on the $850 \mu\text{m}$ polarization as it covers the three regions of interest listed previously.

Comparing the B -field morphology obtained from each velocity channel allows us to check whether the polarization vectors are tracing the same material and region as the gradients do. For example, in the top right panel of Figure 5, we plot the B -field directions predicted by the VGT at $v = 6.43 \text{ km s}^{-1}$ overlaid on the polarization vectors measured at $214 \mu\text{m}$. This specific velocity channel was chosen for this panel as it shows a similar B -field morphology as the polarization data, and readers should note that the predicted B -field morphology using other channels, such as 5.58 or 7.26 km s^{-1} , as shown in Figure 4, can show significant differences. Indeed, in the case of N_2H^+ in the top left panel of Figure 5, the $214 \mu\text{m}$ polarization does not match the directions predicted using the $v = 13.0 \text{ km s}^{-1}$ channel map.

Here, we analyze the angle distribution obtained from the VGT and from the dust polarization. Since turbulence is a statistical measure, it must be compared with certain statistical parameters, including the mean and standard deviation. The standard method to compare the B -field orientation inferred from dust emission and from the VGT is via the alignment measure (AM), which spans from 0 to 1. In this case, the AM has a value close to 1, meaning there is good alignment between the overall B -field orientations inferred from the two techniques. However, this only provides a shallow conclusion and particularly masks many contributions from other mechanisms (e.g., gravity, outflow, shock) with significant information relating to the local star formation properties. Here, we remind the readers that the orientation of turbulent eddies concerning the local B -field is a statistical concept. Hence, in real space, the individual gradient vectors are not necessarily required to have any relation to the local B -field direction. Similar to sub-block averaging, one of the essential steps in applying the VGT is the expected value of the data within the block, which is thus the most probable orientation of the B -field direction (K. H. Yuen & A. Lazarian 2017a).

We focus the analysis on three representative regions based on the integrated intensity map of the N_2H^+ , as the tracer is tracing the gas more relevant to the cloud and star formation and without limitation from the depletion compared to C^{18}O or contamination of other structures as for ^{13}CO and ^{12}CO . We dubbed the three regions Blob, Hinge, and Filament. The N_2H^+ emission of the Blob region is shown to have the least star formation activities and represents the region with the least dense gas. The Hinge region shows some star formation activity and stronger gas intensities. Finally, the Filament

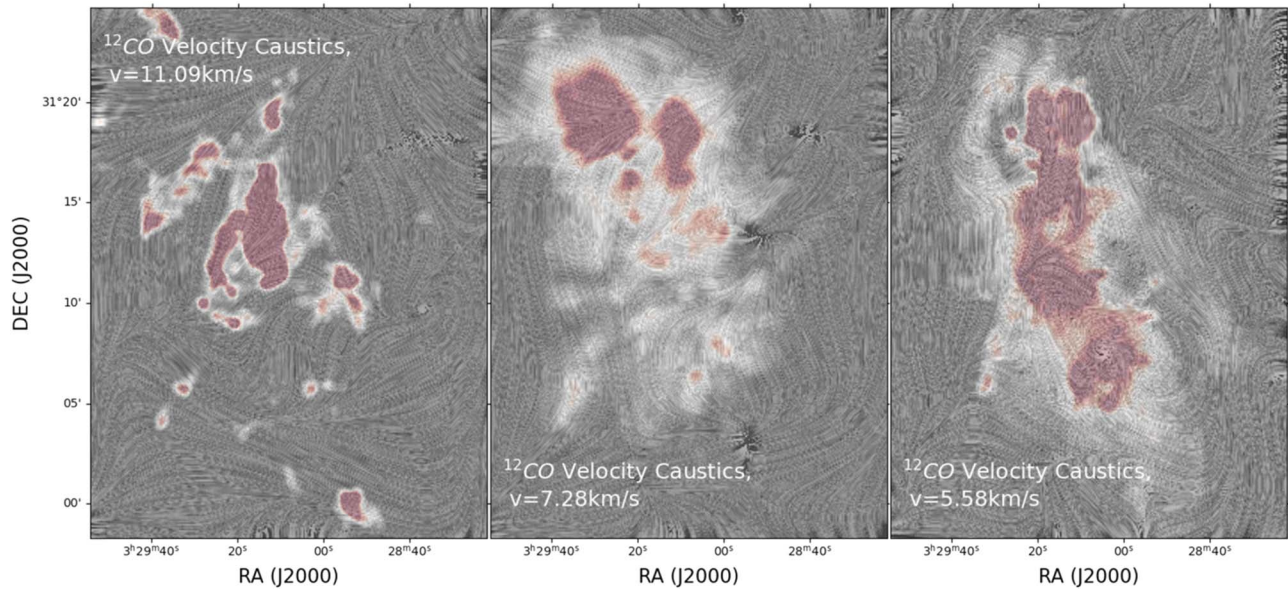


Figure 4. The predicted B -field direction drawn via LIC given by the VGT method (Section 3.3) overlaid on the velocity channel intensities for three selected velocity channels: $v = 11.09, 7.28, 5.58 \text{ km s}^{-1}$.

region shows active star formation activities with hints of large-scale shocks (see Figure 2).

We plot the histogram distribution of inferred B -field position angles for each region in the top panel of Figure 6 for each tracer. When computing the histogram, we fix the velocity channel at the peak of N_2H^+ . Notice that the gradient distribution from each molecular tracer can only trace the statistical properties of magnetized turbulence up to a certain optical depth (C.-H. Hsieh et al. 2019; Y. Hu et al. 2019b). Here, we first compare the orientation inferred via VGT with that of different gas tracers. The shapes of the orientation distributions of different tracers are generally similar but with ^{12}CO always offset from the other tracers from a few degrees in the Hinge and Filament regions to $\sim 20^\circ$ toward the Blob region. The rotated VGT angle histogram distributions of the Blob and Filament regions have distinct peaks at $\pm 90^\circ$ and roughly at 0° , and relatively uniform distributions stretching from 0 to 90° are observed. We also note that ^{12}CO only presents a single peak but not the other peaks at $\pm 90^\circ$. The Hinge region has a precise single peak shape at 0° but with a relatively large ($\sim 25^\circ$) dispersion. Compared to the magnetic field orientations inferred from polarized dust emissions, we generally find noteworthy features, and the main findings are summarized in the following.

We notice that, in general, there are no clear correlations between the orientations of rotated VGT and the dust-inferred magnetic field morphology based on polarized dust emissions except in the Filament region. In particular, the Hinge region presents a bimodal distribution in dust polarization angles with peaks at $\pm 75^\circ$ (see the lower panel of Figure 6), which is close to normal to the expected rotated VGT angles. These differences may be attributed to the effect of gravity, in which the rotated VGT orientations are normal to the dust polarization angle orientations. Turning to the Blob region, the distribution between VGT and dust-inferred orientations is less distinct but still not consistent. While the dust polarization angle presents a prominent peak toward $\sim -25^\circ$, the rotated VGT angle histogram distribution shows a more uniform distribution with a dip at $\sim 22.5^\circ$, suggesting clear misalignment with the dust

polarization. Finally, we see more agreement between VGT orientation and the dust-inferred magnetic field orientations in the Filament region. These results are in contrast to the prediction of anisotropy theory, which suggested an overall agreement between the rotated VGT orientations and the thermal dust-inferred magnetic field orientations toward regions where gravity and feedback are not important, but with strong misalignment or even normal to the dust-inferred magnetic field orientations when the effects of turbulent, feedback, and gravity become important. The Hinge and Blob are regions expected to have close alignment in the context of a dynamically important magnetic field regulating gas kinematics, but they instead display a clear misalignment larger than 20° . On the other hand, the Filament region, where the impact of feedback and gravitation are expected to be the greatest (e.g., M. De Simone et al. 2022), ends up having the best alignment. The misalignment in the Hinge and Blob regions may be attributed to the highly turbulent environment, and thus its super-Alfvénic conditions. However, the magnetic field morphology is ordered with a light arc-shaped morphology. Therefore, it seems unlikely that the environment is super-Alfvénic, as the magnetic field morphology should be randomized. A possible explanation is that the curved magnetic field morphology could be the result of nearby feedback, in which the compression alters the velocity caustics and thus resulting in the misalignment. However, there seem to be no clear feedback-driving sources around the Blob region. For the Hinge region, the large offset could be due to compression from nearby feedback (e.g., SVS13 region), resulting in the curved magnetic field morphology. The overall good alignment between the VGT directions (except ^{12}CO) inferred from line measurements and the magnetic field direction inferred from dust toward the Filament region suggest either the effects of feedback (e.g., shock, outflow, etc.) and gravity are not significant enough to alter the magnetic field morphology. However, the Filament region has multiple identified outflows, shocks, and clear star-forming activity (see, e.g., I. W. Stephens et al. 2017; M. De Simone et al. 2022), suggesting that the feedback should play a role in shaping the gas kinematics on

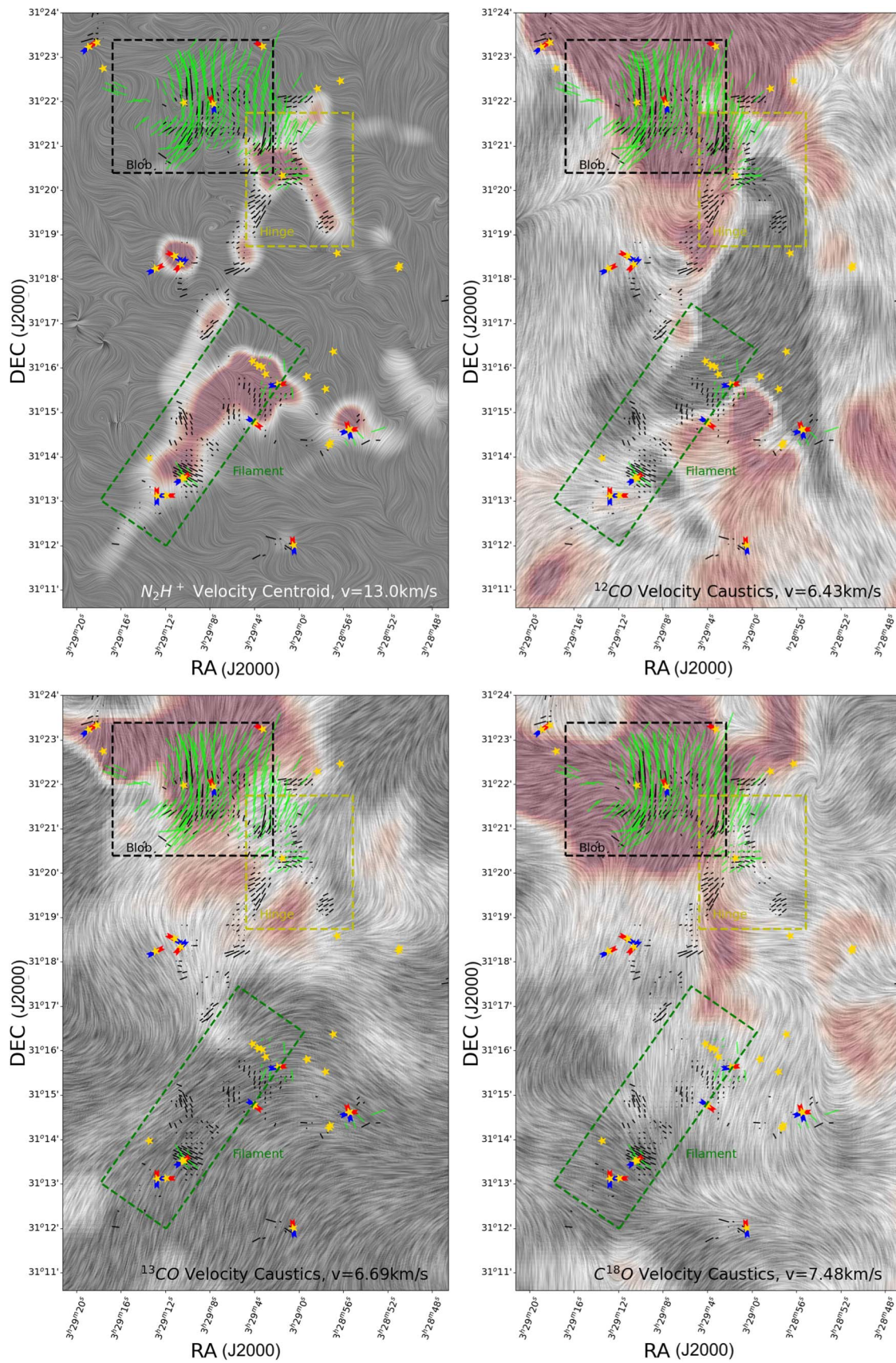


Figure 5. (Top left) The B -field direction computed at 6.43 km s^{-1} as predicted by the N_2H^+ VGT compared to the dust polarization at $214\ \mu\text{m}$ (black vectors) and $850\ \mu\text{m}$ polarization (green vectors). The filled yellow stars are the locations of the protostars (J. J. Tobin et al. 2016). The region classifications (Blob, Hinge, Filament) are laid out as in Figure 2. Furthermore, the outflow directions (I. W. Stephens et al. 2017) are plotted also in the same figure. Similar plots on ^{12}CO , ^{13}CO , and C^{18}O channel maps are also provided at their respective velocity channel with peak intensities. The name of each tracer is labeled in the lower right corner.

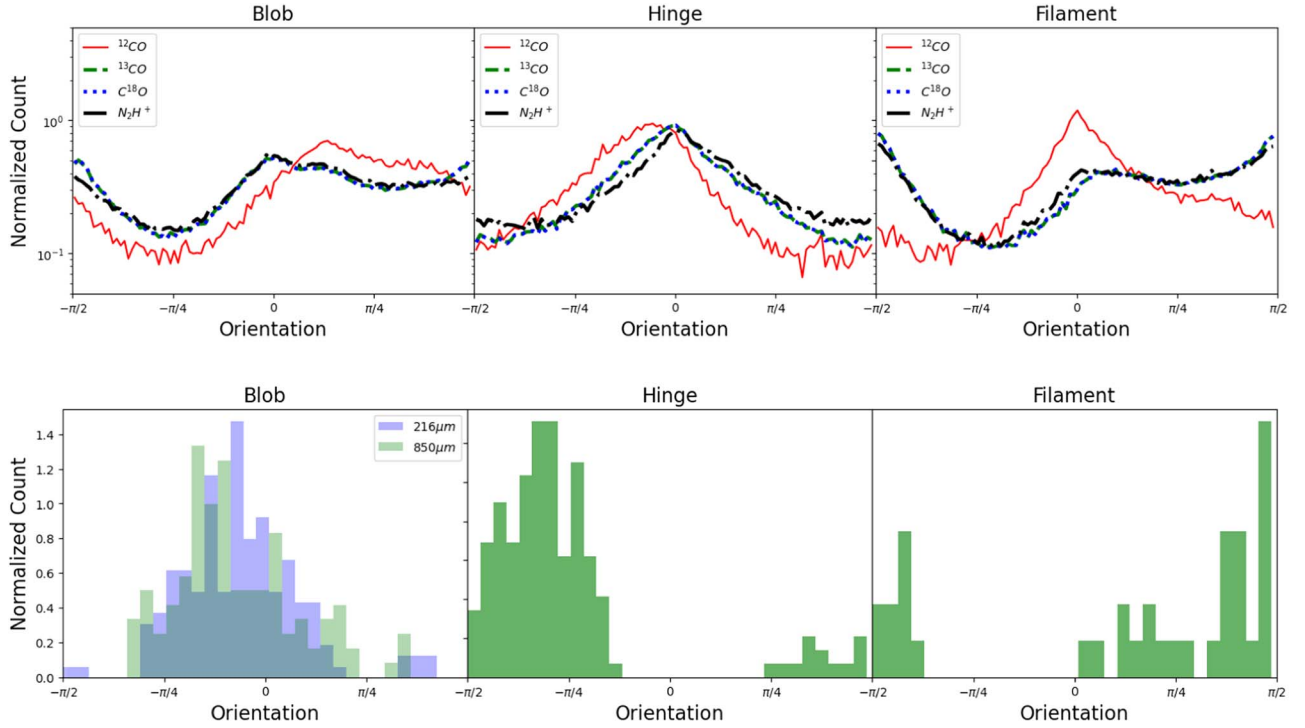


Figure 6. Histograms of both gradient angles (computed for each tracer in the upper panels) and polarization angles (computed for 214 and 850 μm dust polarization observations in the lower panels) for the three selected regions in NGC 1333 by choosing the same velocity channel. From left to right: Blob, Hinge, Filament.

the large scale that would be reflected in the VGT analysis. A possible explanation is that the shock propagation is parallel to the magnetic field orientation; thus, the velocity gradient (affected by the shock) orientation aligns with the magnetic field (see, e.g., M. De Simone et al. 2022). The feedback in the Filament region may be more energetic than the B -fields, and thus, the feedback may determine the direction of the B -fields observed via dust polarization. In summary, the applicability of VGT could be affected by shocks, and may be sensitive to the relative orientation between the shock propagation and the magnetic field direction, as explained below. Toward the Hinge region, the relative direction is close to 90° between the magnetic field and the shock propagation. Since the velocity gradient is in the direction of the shock propagation, this results in a close to 90° shift between the VGT-inferred direction and the magnetic field orientation. On the other hand, the relative orientation is parallel between the magnetic field direction and the shock propagation toward the Filament region, which will result in a statistically good alignment between the VGT-inferred direction and the magnetic field direction, as reflected in the histogram distribution. However, in this case, the agreement is just because the shock direction happens to be aligned with the magnetic field orientation.

5. Inclination Angle γ , 3D M_A , and the 3D B -Field Properties of NGC 1333

The computation of the true 3D Alfvénic Mach number M_A in the system requires additional information on how the mean B -field in the region of interest is inclined with respect to the line of sight. In a recent series of studies, K. H. Yuen et al. (2023c) and S. Malik et al. (2023) provide a systematic method to retrieve the angle γ between the mean B -field and the line of sight from the statistics of the Stokes parameters.

K. H. Yuen et al. (2023c) observed that the global correlation function of an observable X , denoted as D_X , is defined as follows:

$$D_X(\mathbf{R}) = \int d^2\mathbf{R}' (X(\mathbf{R}')X(\mathbf{R}' + \mathbf{R}))^2, \quad (7)$$

where \mathbf{R} is the 2D vector on the plane of the sky. Furthermore, S. Malik et al. (2023) introduce a statistical technique known as the “ Y -parameter,” which relies on the relative anisotropies of the correlation function of the observable quantities $I_{\text{Stokes}} + Q_{\text{Stokes}} \propto B_x^2$ and $I_{\text{Stokes}} - Q_{\text{Stokes}} \propto B_y^2$, where B_x and B_y represent the plane-of-sky components of the B -field. The Y -parameter is defined as

$$\begin{aligned} Y &= \frac{\text{anisotropy}(D_{I_{\text{Stokes}}+Q_{\text{Stokes}}})}{\text{anisotropy}(D_{I_{\text{Stokes}}-Q_{\text{Stokes}}})} \\ &= \frac{v/h(D_{I_{\text{Stokes}}+Q_{\text{Stokes}}})}{v/h(D_{I_{\text{Stokes}}-Q_{\text{Stokes}}})}, \end{aligned} \quad (8)$$

where the terms v and h denote the minor and major axis of the correlation function relative to the projected magnetic field directions mapped by VGT, respectively. The value of γ , together with the dominant fraction of B -field modes, can be calculated using the recipe outlined by S. Malik et al. (2023; see S. Malik et al. 2023 for an application to the TeV halo). We report our estimate of γ in Table 2. Readers can refer to S. Malik et al. (2023) for a comprehensive diagnostic flowchart. Together with the M_A estimation method given in Section 3.3, we provide our estimate of the 3D Alfvénic Mach number M_A in Table 2. Our estimation of the 3D M_A depends on whether the analyzed region is dominated by Alfvén or compressive turbulence, which we cannot accurately determine in this work. We therefore present in Table 2 the 3D M_A and

Table 2
Statistical Measures of the Gradient Fluctuations

	Blob	Hinge	Filament
$M_A/\sin \gamma$	0.74	0.52	0.69
Y	0.135	0.008	2.639
Inferred γ	$\gamma < 5^\circ$ (C) or $\gamma > 60$ (A)	$\gamma < 5^\circ$ (C) or $\gamma > 60^\circ$ (A)	$10^\circ < \gamma < 30^\circ$
Inferred $M_{A,3D}$	< 0.06 (C) > 0.64 (A)	< 0.05 (C) > 0.45 (A)	0.12 – 0.34

Notes. M_A and γ are defined by A. Lazarian et al. (2024); K. H. Yuen et al. (2023c); S. Malik et al. (2023). C stands for “compressible mode dominated” while A stands for “Alfvén mode dominated” case.

their respective γ for both cases. Notice that the Alfvénic Mach number is derived based on the ratio between the peak and the base (A. Lazarian et al. 2018), which, in this case, the VGT-inferred orientations show a prominent peak to apply for such estimation.

6. Discussion

6.1. Gradients of Caustics as Primary B-field Tracers in Spectroscopic Observations

K. H. Yuen et al. (2021) resolve a number of misunderstandings in the community on what kinds of turbulence statistics channel maps contain. In general, a channel map can be written as a sum of two contributing parts: density and velocity. In particular, in the case of HI and other warm line tracers, the VDA can separate the contributions of the velocity and of the density when thermal broadening dominates over the turbulent contribution.

Why is this separation of the density and velocity contributions so important, both theoretically and observationally? This is because the fundamental reason why gradients can trace B-fields is tied to their corresponding statistics in magnetized turbulence. According to the theory of MHD turbulence (e.g., A. Beresnyak & A. Lazarian 2006 and references therein), the velocity statistics are generally anisotropic along the B-field, while density statistics are often misaligned with the B-field when the underlying turbulent environment is in compression or self-gravitating. Indeed, it has repeatedly been shown by numerical papers (K. H. Yuen & A. Lazarian 2017a, 2017b; A. Lazarian & K. H. Yuen 2018a; Y. Hu et al. 2019a) that the gradients of velocity observables perform better than that of density gradients to trace B-fields.

In contrast, A. Lazarian & K. H. Yuen (2018a) originally proposed that the velocity channels trace the fluctuations of pure velocity fluctuations. In that case, the velocity channel gradients should exhibit more similarity in terms of turbulence statistics to velocity fluctuations since the velocity channel gradients are better at tracing the B-field compared to the gradients of velocity centroids (D. F. González-Casanova & A. Lazarian 2017; K. H. Yuen & A. Lazarian 2017a). However, from a theoretical point of view, the pure velocity quantifier that traces B-fields the best is the velocity caustics, which is equivalent to the channel map in the limit of zero thermal broadening.

The VDA allows us to quantify the contributions of density and velocity fluctuations within velocity channels, and thus obtain velocity caustics that better represent reality. As demonstrated in K. H. Yuen et al. (2021), using caustics

gradients, we can focus on the pure velocity statistics in real applications without worrying about the contributions from densities where they have very different statistics. Together with the tool sets from K. H. Yuen et al. (2021) (1σ diagram, P_d/P_v spectra), observers can now have full information on what scale and what velocity channels do they need to examine for a better accuracy of B-field tracing using the gradient technique.

6.2. Caustics Gradients Under Self-gravity

A similar argument to the one presented in the previous subsection also applies when we are using gradients to probe self-gravitating regions. K. H. Yuen & A. Lazarian (2017b) suggested that gradients of both density and velocity features will gradually¹² rotate from aligning perpendicularly to parallelly to the directions of the magnetic fields. With the VDA, we can further probe how the velocity caustics behave in the presence of gravity. According to the description in K. H. Yuen & A. Lazarian (2017b), the caustics gradients should be the parameters least affected by gravity. However, when the gravitational force becomes dominant, the caustics gradients will eventually turn by 90° . This change happens as the acceleration induced by gravity gets larger than the acceleration induced by turbulence. The relative orientations between the p_v gradient and both the intensity gradient and the polarization vectors will change. This process is similar to the use of the velocity gradients (see K. H. Yuen & A. Lazarian 2017b), but we expect that using p_v will help us describe the collapse regions significantly better. The corresponding methods and algorithms will be presented and discussed in a forthcoming paper (K. H. Yuen et al. 2024, in preparation).

6.3. Caustics Gradients Under the Effects of Outflows and Shocks

Outflows provide another source of velocity anisotropy that could affect the applicability of VGT. In particular, an outflow could drive and maintain turbulence, but it could also perturb the magnetic fields. NGC 1333 is particularly active with outflows (e.g., I. W. Stephens et al. 2017). Here, it is unclear whether the VGT method is sensitive to the effects of outflows for the NGC 1333 region. However, ^{12}CO better traces outflows than the other three spectral lines, which may, in part, explain why its orientation distribution (Figure 6) varies from the other spectral lines.

The good alignment between the VGT-inferred orientation and the magnetic field morphology toward the active star-forming and feedback Filament region raises the alarm on the validity of the application of VGT to infer magnetic field orientations. In fact, the comparison between the orientation of the caustics and the magnetic field orientation reflects that the caustics gradient could be sensitive to the relative orientation between the shock propagation and the magnetic field direction. This also shows that large-scale shocks arising from nearby H II region bubbles, supernova remnants, or outflows (at a smaller scale) could have a significant impact on the caustics gradient. We stress that the applicability of VGT and its

¹² The word “gradually” is important here since it is not a one-time process for the gradient vectors to flip their directions. Instead, as discussed in K. H. Yuen & A. Lazarian (2017b), the relative orientation of both intensity and velocity centroid gradients will change from perpendicular to parallel according to the stage of collapse, with the latter being a slower process.

interpretation require a good characterization of the physical and chemical conditions of the region, as well as the relative importance of the contributions of each of the mechanisms at different scales. A multiscale view of the links between caustics gradient and magnetic field in connection to different physical mechanisms (e.g., shocks, outflow, gravity, etc.) toward NGC 1333 will be presented and discussed in a forthcoming paper.

7. Conclusion

In this paper, we present the B -field morphology of NGC 1333 as traced by the VGT and compared it with dust polarization measurements at 214 and 850 μm wavelengths. We divided the NGC 1333 cloud into three subregions according to B -field morphology and velocity gradient properties, namely the Blob, the Hinge, and the Filament (see Figure 2). To summarize, we found that:

1. The separation of intensity fluctuations within velocity channels is crucial for using the VGT. Particularly, the two-peak phenomenon predicted by K. H. Yuen et al. (2021) to be due to turbulent motions was observed in the Blob and Hinge regions (see Figure 3). Differing from the other two regions, the velocity caustics distribution from the Filament region is not a two-peak distribution, meaning that turbulence might not be dominant in this subregion of NGC 1333 (K. H. Yuen et al. 2021).
2. We apply the VGT on the velocity caustics maps of each selected subregion for a range of chosen line-of-sight velocities v (see Figure 4).
3. We in general do not find a close correlation between the velocity gradient inferred orientations and the dust-inferred magnetic field orientations. The details are given below from the lowest best correlation:
 - (a) *Hinge*: No clear correlations between the velocity gradient inferred orientations and the thermal dust-inferred magnetic field orientations. The VGT-inferred orientations show a clear single-peaked distribution, while the thermal dust-inferred magnetic field shows a close-to-normal bimodal distribution. However, we speculate the effect of shocks on the strong misalignment between the orientation of the caustics and magnetic field direction.
 - (b) *Blob*: A less distinct angle distribution between the VGT and thermal dust-inferred magnetic field angle, but the overall nonmatching orientation distribution still unveils inconsistency between the angles inferred between the gas and dust.

(c) *Filament*: The B -field structure traced with the VGT shows the best agreement, but this correlation could be due to the effect of shock. All in all, these findings are in contrast to the predictions from the typical VGT studies in the literature, thus requiring caution and revision to the assumptions and the results presented in the literature.

4. We estimate both the inclination angle and the M_A of the three regions (see Table 2) and find that these regions are all sub-Alfvénic.

Acknowledgments

The research presented in this paper was supported by the Laboratory Directed Research and Development program of Los Alamos National Laboratory under project number(s) 20220700PRD1, 20220107DR. We acknowledge Yasuo Doi and the BISTRO survey team, as well as the CLASSy team as a whole, for providing us with polarimetric and spectroscopic data for NGC 1333.

Based on observations made with the NASA/DLR SOFIA. SOFIA is jointly operated by the Universities Space Research Association, Inc. (USRA), under NASA contract NNA17BF53C, and the Deutsches SOFIA Institut (DSI) under DLR contract 50 OK 2002 to the University of Stuttgart. Financial support for I.W.S. and S.C. was provided by NASA through awards 06_0098 and 08_0186 issued by USRA.

The JCMT is operated by the East Asian Observatory on behalf of The National Astronomical Observatory of Japan; Academia Sinica Institute of Astronomy and Astrophysics; the Korea Astronomy and Space Science Institute; the National Astronomical Research Institute of Thailand; Center for Astronomical Mega-Science (as well as the National Key R&D Program of China with No. 2017YFA0402700). Additional funding support is provided by the Science and Technology Facilities Council of the United Kingdom and participating universities and organizations in the United Kingdom and Canada. Additional funds for the construction of SCUBA-2 were provided by the Canada Foundation for Innovation. The authors wish to recognize and acknowledge the very significant cultural role and reverence that the summit of Maunakea has always had within the indigenous Hawaiian community.

Software: LIC, matplotlib (J. D. Hunter 2007), NumPy (S. van der Walt et al. 2011; C. R. Harris et al. 2020), Astropy (Astropy Collaboration et al. 2013, 2018).

Appendix

The acronyms used in the paper are defined in Table 3 given below.

Table 3
Table of Symbols Used in This Paper

Symbol	Meaning
Shorthand Operators	
$\langle \cdots \rangle_a$	Spatial averaging operator over parameter a .
Plasma Parameters	
ρ	Fluid density
\mathbf{v}	Fluid velocity vector, rms value of it = v_{turb}
\mathbf{B}_0	Mean B -field vector, its unit vector is sometimes denoted as $\hat{\lambda}$
$\delta \mathbf{B}$	$= \mathbf{B} - \mathbf{B}_0$, the mean-subtracted B -field
v_A	$= \frac{ \mathbf{B}_0 }{\sqrt{4\pi(\rho)}}$, Alfvénic speed
c_s	Sonic speed
M_s	$= v_{\text{turb}}/c_s$, sonic Mach number
M_A	$= v_{\text{turb}}/v_A$, Alfvénic Mach number
β	$= 2M_A^2/M_s^2$, plasma compressibility
γ	The angle between the mean B -field and the line of sight
\mathbf{X}	Plane-of-sky displacement vector
Δv	Velocity channel width
T	Temperature
Statistical Parameters	
$p(\mathbf{X}, v_0, \Delta v)$	Velocity channel at velocity v_0 , with velocity channel width δv (A. Lazarian & D. Pogosyan 2000).
Y	Y -parameter, defined by Equation (8) (S. Malik et al. 2023a).
J_2	Gradient angle variance measured by the Lu et al.-type distribution function, defined by Equation (2)
θ_B	Predicted B -field angle by the Lu et al.-type distribution function
D_X	2D correlation function for observable X

ORCID iDs

Archana Soam  <https://orcid.org/0000-0002-6386-2906>
 Ka Ho Yuen  <https://orcid.org/0000-0003-1683-9153>
 Ian Stephens  <https://orcid.org/0000-0003-3017-4418>
 Chi Yan Law  <https://orcid.org/0000-0003-1964-970X>
 Ka Wai Ho  <https://orcid.org/0000-0003-3328-6300>
 Simon Coudé  <https://orcid.org/0000-0002-0859-0805>

References

Andersson, B.-G., Lazarian, A., & Vaillancourt, J. E. 2015, *ARA&A*, **53**, 501
 André, P., Revéret, V., Könyves, V., et al. 2016, *A&A*, **592**, A54
 Astropy Collaboration, Price-Whelan, A. M., Sipőcz, B. M., et al. 2018, *AJ*, **156**, 123
 Astropy Collaboration, Robitaille, T. P., Tollerud, E. J., et al. 2013, *A&A*, **558**, A33
 Beresnyak, A., & Lazarian, A. 2006, *ApJL*, **640**, L175
 Cabral, B., & Leedom, L. C. 1993, in Proc. of the 20th Annual Conf. on Computer Graphics and Interactive Techniques, SIGGRAPH '93 (New York: Association for Computing Machinery), 263
 Chapin, E. L., Berry, D. S., Gibb, A. G., et al. 2013, *MNRAS*, **430**, 2545
 Cho, J., & Lazarian, A. 2002, *PhRvL*, **88**, 245001
 Cho, J., & Lazarian, A. 2003, *MNRAS*, **345**, 325
 Cho, J., & Vishniac, E. T. 2000, *ApJ*, **539**, 273
 Clarke, M., & Vliet, R. V. 2023, SOFIA-USRA/sofia_redux: v1.3.2, Zenodo, doi:10.5281/zenodo.7783303

Currie, M. J., Berry, D. S., Jenness, T., et al. 2014, in ASP Conf. Ser. 485, Astronomical Data Analysis Software and Systems XXIII, ed. N. Manset & P. Forshay (San Francisco, CA: ASP), 391
 De Simone, M., Codella, C., Ceccarelli, C., et al. 2022, *MNRAS*, **512**, 5214
 Dempsey, J. T., Friberg, P., Jenness, T., et al. 2013, *MNRAS*, **430**, 2534
 Dhabal, A., Mundy, L. G., Chen, C.-y., Teuben, P., & Storm, S. 2019, *ApJ*, **876**, 108
 Dhabal, A., Mundy, L. G., Rizzo, M. J., Storm, S., & Teuben, P. 2018, *ApJ*, **853**, 169
 Doi, Y., Hasegawa, T., Furuya, R. S., et al. 2020, *ApJ*, **899**, 28
 Dolginov, A. Z., & Mitrofanov, I. G. 1976, *Ap&SS*, **43**, 291
 Esquivel, A., & Lazarian, A. 2005, *ApJ*, **631**, 320
 Esquivel, A., & Lazarian, A. 2010, *ApJ*, **710**, 125
 Federrath, C. 2015, *MNRAS*, **450**, 4035
 Friberg, P., Bastien, P., Berry, D., et al. 2016, *Proc. SPIE*, **9914**, 991403
 Gan, Z., Li, H., Fu, X., & Du, S. 2022, *ApJ*, **926**, 222
 Goldreich, P., & Sridhar, S. 1995, *ApJ*, **438**, 763
 González-Casanova, D. F., & Lazarian, A. 2017, *ApJ*, **835**, 41
 Gordon, M. S., Lopez-Rodriguez, E., Andersson, B. G., et al. 2018, arXiv:1811.03100
 Harper, D. A., Runyan, M. C., Dowell, C. D., et al. 2018, *JAI*, **7**, 1840008
 Harris, C. R., Millman, K. J., van der Walt, S. J., et al. 2020, *Natur*, **585**, 357
 Holland, W. S., Bintley, D., Chapin, E. L., et al. 2013, *MNRAS*, **430**, 2513
 Hsieh, C.-H., Hu, Y., Lai, S.-P., et al. 2019, *ApJ*, **873**, 16
 Hu, Y., Lazarian, A., & Yuen, K. H. 2020, *ApJ*, **897**, 123
 Hu, Y., Yuen, K. H., & Lazarian, A. 2019a, *ApJ*, **886**, 17
 Hu, Y., Yuen, K. H., Lazarian, A., et al. 2019b, *ApJ*, **884**, 137
 Hu, Y., Yuen, K. H., Lazarian, V., et al. 2019c, *NatAs*, **3**, 776
 Hunter, J. D. 2007, *CSE*, **9**, 90
 Kandel, D., Lazarian, A., & Pogosyan, D. 2016, *MNRAS*, **461**, 1227
 Kandel, D., Lazarian, A., & Pogosyan, D. 2017, *MNRAS*, **464**, 3617
 Kowal, G., & Lazarian, A. 2010, *ApJ*, **720**, 742
 Lazarian, A., & Hoang, T. 2007, *MNRAS*, **378**, 910
 Lazarian, A., & Pogosyan, D. 2000, *ApJ*, **537**, 720
 Lazarian, A., & Pogosyan, D. 2004, *ApJ*, **616**, 943
 Lazarian, A., & Pogosyan, D. 2012, *ApJ*, **747**, 5
 Lazarian, A., & Pogosyan, D. 2016, *ApJ*, **818**, 178
 Lazarian, A., & Vishniac, E. T. 1999, *ApJ*, **517**, 700
 Lazarian, A., & Yuen, K. H. 2018a, *ApJ*, **853**, 96
 Lazarian, A., & Yuen, K. H. 2018b, *ApJ*, **865**, 59
 Lazarian, A., Yuen, K. H., Ho, K. W., et al. 2018, *ApJ*, **865**, 46
 Lazarian, A., Yuen, K. H., & Pogosyan, D. 2022, *ApJ*, **935**, 77
 Lazarian, A., Yuen, K. H., & Pogosyan, D. 2024, *ApJ*, **974**, 237
 Li, H.-b., Fang, M., Henning, T., & Kainulainen, J. 2013, *MNRAS*, **436**, 3707
 Li, P. S., Klein, R. I., & McKee, C. F. 2018, *MNRAS*, **473**, 4220
 Li, P. S., Lopez-Rodriguez, E., Soam, A., & Klein, R. I. 2022, *MNRAS*, **514**, 3024
 Liu, T., Li, P. S., Juvela, M., et al. 2018, *ApJ*, **859**, 151
 Lu, Z., Lazarian, A., & Pogosyan, D. 2020, *MNRAS*, **496**, 2868
 Makwana, K. D., & Yan, H. 2020, *PhRvX*, **10**, 031021
 Malik, S., Yuen, K. H., & Yan, H. 2023, *MNRAS*, **524**, 6102
 Marsh, K. A., Kirk, J. M., André, P., et al. 2016, *MNRAS*, **459**, 342
 Pillai, T., Kauffmann, J., Tan, J. C., et al. 2015, *ApJ*, **799**, 74
 Sandell, G., & Knee, L. B. G. 2001, *ApJL*, **546**, L49
 Soam, A., Liu, T., Andersson, B. G., et al. 2019, *ApJ*, **883**, 95
 Soler, J. D., & Hennebelle, P. 2017, *A&A*, **607**, A2
 Soler, J. D., Hennebelle, P., Martin, P. G., et al. 2013, *ApJ*, **774**, 128
 Stephens, I. W., Dunham, M. M., Myers, P. C., et al. 2017, *ApJ*, **846**, 16
 Stephens, I. W., Myers, P. C., Zucker, C., et al. 2022, *ApJL*, **926**, L6
 Storm, S., Mundy, L. G., Fernández-López, M., et al. 2014, *ApJ*, **794**, 165
 Tobin, J. J., Looney, L. W., Li, Z.-Y., et al. 2016, *ApJ*, **818**, 73
 van der Walt, S., Colbert, S. C., & Varoquaux, G. 2011, *CSE*, **13**, 22
 Ward-Thompson, D., Pattle, K., Bastien, P., et al. 2017, *ApJ*, **842**, 66
 Yuen, K. H., Chen, A., Ho, K. W., & Lazarian, A. 2023a, *MNRAS*, **519**, 2701
 Yuen, K. H., Ho, K. W., & Lazarian, A. 2021, *ApJ*, **910**, 161
 Yuen, K. H., & Lazarian, A. 2017a, *ApJL*, **837**, L24
 Yuen, K. H., & Lazarian, A. 2017b, arXiv:1703.03026
 Yuen, K. H., & Lazarian, A. 2020a, *ApJ*, **898**, 65
 Yuen, K. H., & Lazarian, A. 2020b, *ApJ*, **898**, 66
 Yuen, K. H., Li, H., & Yan, H. 2023b, *NatPh*, submitted
 Yuen, K. H., Yan, H., & Lazarian, A. 2023c, *MNRAS*, **521**, 530
 Zhang, H., Chepurmov, A., Yan, H., et al. 2020, *NatAs*, **4**, 1001
 Zhao, S., Yan, H., Liu, T. Z., Yuen, K. H., & Wang, H. 2023, *NatAs*, **8**, 725
 Zucker, C., Schlawy, E. F., Speagle, J. S., et al. 2018, *ApJ*, **869**, 83