

Soft X-ray and FUV observations of Nova Her 2021 (V1674 Her) with *AstroSat*

Yash Bhargava^{1,2★}, Gulab Chand Dewangan¹, G. C. Anupama³, U. S. Kamath³, L. S. Sonith,³ Kulinder Pal Singh⁴, J. J. Drake,^{5,6} A. Beardmore⁷, G. J. M. Luna,⁸ M. Orío^{9,10} and K. L. Page⁷

¹Inter-University Centre for Astronomy and Astrophysics, Ganeshkhind, Pune 411007, India

²Department of Astronomy and Astrophysics, Tata Institute of Fundamental Research, 1 Homi Bhabha Road, Colaba, Mumbai 400005, India

³Indian Institute of Astrophysics, II Block Koramangala, Bengaluru 560034, India

⁴Department of Physical Sciences, Indian Institute of Science Education and Research Mohali, Knowledge City, Sector 81, SAS Nagar, Punjab 140306, India

⁵Center for Astrophysics|Harvard and Smithsonian, 60 Garden Street, Cambridge, MA 02138, USA

⁶Lockheed Martin, 3251 Hanover St, Palo Alto, CA 94304, USA

⁷School of Physics and Astronomy, The University of Leicester, University Road, Leicester LE1 7RH, UK

⁸CONICET/Universidad Nacional de Hurlingham, Av. Gdor. Vergara 2222, Villa Tesei, 1686 Buenos Aires, Argentina

⁹INAF-Osservatorio di Padova, Vicolo Osservatorio 5, I-35122 Padova, Italy

¹⁰Department of Astronomy, University of Wisconsin, 475 N. Charter Street, Madison, WI 53706, USA

Accepted 2023 December 14. Received 2023 December 13; in original form 2023 August 2

ABSTRACT

Nova Her 2021 or V1674 Her was one of the fastest novae to be observed so far. We report here the results from our timing and spectral studies of the source observed at multiple epochs with *AstroSat*. We report the detection of a periodicity in the source in soft X-rays at a period of 501.4–501.5 s which was detected with high significance after the peak of the super-soft phase, but was not detected in the far ultraviolet (FUV) band of *AstroSat*. The shape of the phase-folded X-ray light curves has varied significantly as the nova evolved. The phase-resolved spectral studies reveal the likely presence of various absorption features in the soft X-ray band of 0.5–2 keV, and suggest that the optical depth of these absorption features may be marginally dependent on the pulse phase. Strong emission lines from Si, N, and O are detected in the FUV, and their strength declined continuously as the nova evolved and went through a bright X-ray state.

Key words: methods: observational – novae, cataclysmic variables – ultraviolet: general – X-rays: binaries.

1 INTRODUCTION

Novae are interacting binaries with a white dwarf accreting hydrogen-rich material from a (predominantly) low-mass, late-type main-sequence star. This material forms an accretion disc around the white dwarf. With the accretion of sufficient material a thermonuclear runaway (TNR) occurs in the matter that is electron degenerate (Starfield et al. 2012, 2020), or under ideal gas conditions for accretion rates $\gtrsim 3 \times 10^{-9} M_{\odot} \text{ yr}^{-1}$ (Chomiuk, Metzger & Shen 2021). The TNR causes the nova eruption, an event that is accompanied by the ejection of the accreted material with velocities ranging from a few hundreds to several thousands km s^{-1} and an increase in the luminosity of the object by ~ 5 –19 mag (Vogt 1990; Özdönmez et al. 2018; Kawash et al. 2021). Nova outbursts typically occur for accretion rates of $\dot{M} \leq 10^{-8} M_{\odot} \text{ yr}^{-1}$, while in some systems, where the white dwarf mass is higher, nova outbursts can occur for a higher accretion rate. Systems with one recorded outburst are termed classical novae, while those with multiple outbursts are termed recurrent novae. The white dwarf in some nova systems could be magnetic. A strong magnetic field prevents the formation of an

accretion disc, with accretion happening along the magnetic poles of the white dwarf (polars), while in some cases the strength of the magnetic field is weaker, enough to just disrupt and truncate the inner regions of the accretion disc (intermediate polars), with accretion in such cases happening via accretion curtains on the magnetic poles of the white dwarf (see Della Valle & Izzo 2020, for a recent review).

The classical nova V1674 Her (Nova Her 2021; TCP J18573095+1653396) was discovered on 2021 June 12.537 UT by Seiji Ueda at a visual magnitude of 8.4, and on the rise (<http://www.cbat.eps.harvard.edu/unconf/followups/J18573095+1653396.html>, Li 2021a). Data from the All-Sky Automated Survey for Supernovae (ASAS-SN) revealed a pre-discovery detection on 2021 June 12.1903 (Aydi et al. 2021). Spectroscopic observations on 2021 June 12.84 by Munari, Valisa & Dallaporta (2021) showed the presence of broad P Cygni absorption features of hydrogen Balmer lines at a velocity $\sim 3000 \text{ km s}^{-1}$ confirming it to be a nova. Based on magnitudes in the AAVSO data base, Woodward et al. (2021) estimate the maximum occurred on June 12.96 at $V = 6.14$ mag. With the estimated decline rates of $t_2 = 1.2$ d, $t_3 = 2.2$ d and $t_6 = 14$ d corresponding to change in magnitudes $\Delta m = 2, 3$, and 6 relative to the maximum, respectively (Quimby, Shafter & Corbett

* E-mail: yash.bhargava_003@tifr.res.in

Table 1. Log of *AstroSat* observations. Throughout the article, the observations are referred to by the days elapsed since the detection of the source (also mentioned in the parentheses in the first column). The combined exposure of UVIT filter/gratings for individual observation is less than the corresponding SXT exposure as UVIT has stricter observational constraints than SXT.

OBSID	Instrument	Mode/filter	Start time MJD	End time MJD	Exposure (ks)	Count rate (cts s ⁻¹)	Flux (erg cm ⁻² s ⁻¹)
T04_019T01_9000004516 (Day 24)	SXT	PC	59401.636736	59402.067998	12.57	1.199	8.4×10^{-11}
	UVIT	BaF2	59401.641166	59401.652870	1	7.79	
	UVIT	FUV-G1	59401.654610	59401.852731	5.05	6.97	
	UVIT	FUV-G2	59401.854462	59402.250974	4	6.52	
T04_026T01_9000004556 (Day 37)	SXT	PC	59414.355441	59415.057187	20.49	10.27	6.6×10^{-10}
	UVIT	BaF2	59414.359530	59414.564107	5	2.98	
	UVIT	FUV-G1	59414.565846	59414.917615	9.95	2.69	
	UVIT	FUV-G2	59414.976885	59414.987880	0.95	2.21	
T04_026T01_9000004560 (Day 38)	SXT	PC	59415.437903	59415.728501	10.66	11.07	7.22×10^{-10}
	UVIT	FUV-G2	59415.439995	59415.723665	8.7	2.05	
T04_026T01_9000004624 (Day 54)	SXT	PC	59431.269271	59431.621536	11.84	5.751	3.85×10^{-10}
	UVIT	BaF2	59431.339212	59431.426182	4.45	0.976	
	UVIT	FUV-G1	59431.475899	59431.620301	3.55	1.32	

2021; Woodward et al. 2021), nova V1674 Her is the fastest Galactic nova known to date.

Early UV and optical spectra obtained during the first 23 d since discovery showed the presence of Fe II lines (Albanese et al. 2021; Aydi et al. 2021; Kuin et al. 2021; Woodward et al. 2021; Habtie et al. 2024) that were not present in the later spectra obtained $\gtrsim 5$ d since discovery (Kuin et al. 2021; Wang et al. 2021; Woodward et al. 2021). Early phase spectroscopic observations also indicated changes in the line profiles on time-scales of a day (Aydi et al. 2021; Habtie et al. 2024). In addition to the absorption system noted by Munari, Valisa & Dallaporta (2021), faster components developed, with P Cygni absorptions at blueshifted velocities > 5000 km s⁻¹. These absorption systems are likely due to multiple outflows (Aydi et al. 2021; Habtie et al. 2024). Near-infrared spectra indicated the emergence of coronal lines as early as +11 d, the earliest observed for any classical nova (Woodward et al. 2021). Strong neon lines were present in the late time (\sim month) spectra (Ochner et al. 2021; Wagner et al. 2021; Habtie et al. 2024), suggesting V1674 Her to be an ONe nova, i.e. a nova occurring on an ONe WD.

An uncatalogued γ -ray source at the nova position was detected in the Fermi-LAT data of 0.1–300 GeV obtained during 2021 June 12.0 to 12.96 (Li 2021a, b) with $F(0.1–300 \text{ GeV}) = 1.1 \pm 0.3 \times 10^{-6}$ photons cm⁻² s⁻¹ ($4.4 \pm 1.3 \times 10^{-10}$ erg cm⁻² s⁻¹), and photon index of 2.6 ± 0.3 . V1674 Her was also detected at radio frequencies, as early as ~ 3 d since discovery (Sokolovsky et al. 2021). A detailed multiwavelength study from γ -rays to radio wavelengths by Sokolovsky et al. (2023) indicated the presence of internal shocks that were responsible for the γ -ray emission and the early X-ray emission in the *NuSTAR* (3–30 keV) and *Swift* (0.3–10 keV) observations. In the radio, while the early emission corresponded to thermal, it later developed to synchrotron emission due to the shocks. V1674 Her entered the supersoft X-ray (SSS) phase, caused by nuclear burning of the residual material on the WD surface, at ~ 19 d (Page et al. 2021), and lasted until ~ 60 d.

Mroz et al. (2021) reported a period of 501.4277s in the *r*-band (pre-outburst) light curve based on observations with the Zwicky Transient Facility (ZTF) since 2018, and attributed it to the spin of the WD. Patterson et al. (2022) reported the detection of a 501.486(5)s period in the post-outburst optical light curve, beyond ~ 12 d after discovery. No periodicity was seen in the near-IR by Hansen et al. (2021) in their observations during Days 3–6 after

discovery. Maccarone et al. (2021) detected X-ray oscillations with a period of 503.9 s and an amplitude of 0.6 to 1.4 times the mean count rate based on *Chandra* High-Resolution Camera photometry obtained on Day 28 of the outburst. Drake et al. (2021) reported a period of 501.72 ± 0.11 s in the X-ray based on *Chandra* Low-Energy Transmission Grating Spectrometer observations on Day 37.

The post-outburst increase in the spin period has been attributed to the sudden loss of high-angular-momentum gas from the rotating, magnetic white dwarf due to the nova outburst (Drake et al. 2021; Patterson et al. 2022). *Swift* X-ray observations obtained ~ 10 months after outburst indicated the X-ray light curve continued to be modulated at this period (Page et al. 2022). Patterson et al. (2022) also reported the detection of a 0.152921(3) day period in the optical light curve, attributed to the orbital period of the system. A similar period is also seen in the *TESS* light curve with an additional periodicity at 0.537 d of an unknown origin (Luna, Lima & Orio 2023). Lin et al. (2022) report the detection of this period (0.153 d) in the X-ray bands based on *NICER* observations obtained about a month since discovery.

We present here results based on *AstroSat* observations of V1674 Her in the soft X-ray and Far-UV (FUV) bands during its SSS phase. We describe the observations and the data reduction methods in Section 2. The timing and spectral analysis of the observations are detailed in Sections 3 and 4, respectively. The results and conclusions are reported in Section 5.

2 OBSERVATIONS AND DATA REDUCTION

AstroSat (Singh et al. 2014) is the first Indian multiwavelength astronomy mission operated by the Indian Space Research Organisation (ISRO). It was launched on 2015 September 28 into a low Earth orbit. *AstroSat* carries four co-aligned instruments – the Ultraviolet Imaging Telescope (UVIT; Tandon et al. 2017, 2020), the Soft X-ray Telescope (SXT; Singh et al. 2016, 2017), the Large Area Proportional Counters (Yadav et al. 2016; Antia et al. 2021), and the Cadmium Zinc Telluride Imager (Vadawale et al. 2016).

AstroSat observed V1674 Her on four epochs. Due to the supersoft nature of the source, only SXT and UVIT were used for the observation. The details of the observations and various modes/filters used are reported in Table 1. In the article, the observations are referred to by the days elapsed since the start of the optical outburst

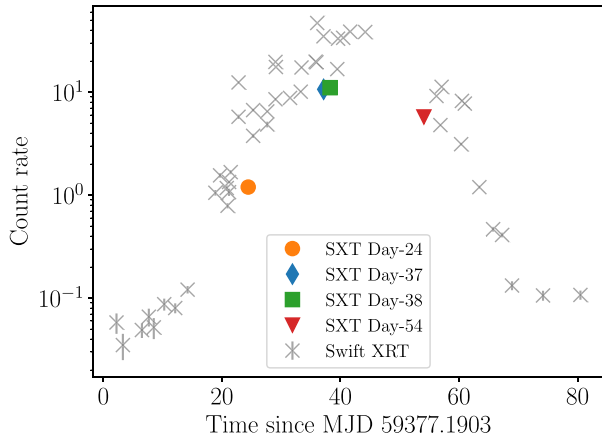


Figure 1. Evolution of the V1674 Her in soft X-rays as seen by *Swift*-XRT shown as grey crosses. The epochs of SXT observations are shown in different colours and symbols. The UVIT observations were simultaneous with SXT observations as indicated in Table 1.

(2021 June 12.1903 or equivalently MJD 59377.1903) of the source (also indicated in Table 1).

2.1 SXT

SXT (Singh et al. 2016, 2017) observed the source on 4 epochs as seen in Fig. 1 with individual light curves shown in Fig. 2. All the observations were conducted in the photon counting (PC) mode. The minimum time resolution of SXT in this mode is 2.3775 s (Singh et al. 2016, 2017). The SXT observations were reduced to level 2 format using the SXTPIPELINE v1.4b as provided by SXT Payload operation centre (POC). The pipeline also includes required calibration files. The data from individual *AstroSat* orbits were merged accounting for the overlap and repeated events using a JULIA based tool provided by SXT-POC. Light curves and spectra were extracted from the merged events file using `xselect` which is a part of the HEASARC suite. We used a circular region with a radius of 16 arcmin centred on the source image accounting for the typical large point-spread function of the instrument. The count rate of the source is typically less than the threshold for pile-up, and therefore, we do not exclude the central region for our studies. Due to the large point-spread function of the instrument, simultaneous background estimation is not possible and thus a standard background (provided by POC) is used. The source is fainter than background level beyond 2 keV, thus the spectral analysis is limited to 0.5–2 keV. The standard response files provided by POC are used and the ancillary response files are modified for the selected region using the code provided by the POC. For the determination of the pulse period, we use light curves with shortest possible time resolution (i.e. 2.3775 s). The latter part of Day 24 observation was contaminated with a solar flare and therefore the corresponding interval was excluded from the analysis.

2.2 UVIT

The UVIT (Tandon et al. 2017, 2020) consists of twin telescopes, one of which offers far ultraviolet (FUV) sensitivity and is known as the FUV channel (1200–1800Å). The second telescope constitutes two channels providing sensitivity in the near ultraviolet (NUV channel; 2000–3000Å) and visible (VIS channel; 3200–5500Å) bands. The FUV and NUV channels are equipped with

a number of broad-band filters and slit-less gratings, and operate in the PC mode. The FUV/NUV channels are capable of high-resolution imaging (FWHM ~ 1 –1.5 arcsec) and timing capability with an accuracy of few millisecond per 1000 s. Here, we use the UVIT data on V1674 Her acquired with the FUV channel using the BaF2 filter (F154W, $\lambda_{\text{mean}} = 1541$ Å, $\Delta\lambda = 380$ Å) and the two gratings FUV-Grating1 (FUV-G1) and FUV-Grating2 (FUV-G2). The two slit-less gratings are mounted in the FUV filter wheel so that their dispersion axes are nearly orthogonal. We obtained the level1 data from the *AstroSat* archive¹, and processed them using the CCDLAB pipeline (Postma & Leahy 2017). We corrected the orbit-wise cleaned event lists for pointing drifts, and aligned them for each observation. We converted these event lists to event files compatible with the HEASARC tool `xselect`², and merged them to obtain a single events file for the entire exposure in the BaF2 filter. We then used `xselect` to extract light curves with 50 s bins from the merged event files using a circular region of radius 10 arcsec centred at the source position. We also extracted background light curves from the source-free regions, and corrected the source light curves for background contributions. The light curves of the observations are shown in Fig. 3.

We also aligned the orbit-wise images and merged them into a single image for each observation. For the spectral extraction, we used the UVITTools.jl package³, and followed the procedures and tools described in Dewangan (2021) and Kumar et al. (2023). We used the FUV grating order -2 as it is well calibrated due to its maximum intensity. We first located the zeroth-order position of the source in the grating images, we then used the centroids along the spatial direction at each pixel to find the dispersion direction for the -2 order. We used a 50-pixel width along the cross-dispersion direction and extracted the one-dimensional count spectra for the FUV gratings in the -2 order. Following a similar procedure, we also extracted background count spectra from source-free regions, and corrected the source spectra for the background contribution. We list the background-subtracted net source count rates for FUV gratings in the -2 order in Table 1. We then performed wavelength and flux calibration and produced the fluxed spectra.

3 PERIODICITY ANALYSIS

The X-ray light curves of Days 37, 38, and 54 show a clear signature of periodic behaviour. The Day 24 light curve (which is right at the beginning of the SSS emission), although variable, does not show periodic changes in the count rate. The period suggested by Patterson et al. (2021) and Drake et al. (2021) is ~ 500 s which is only a factor of 4 smaller than a continuous interval probed by SXT observations. Therefore, we use Lomb-Scargle (LS) techniques⁴ (Lomb 1976; Scargle 1982; VanderPlas et al. 2012; VanderPlas & Ivezić 2015; VanderPlas 2018) to determine the period. To search for the periodicity around the suggested period, we computed the LS power in a limited frequency range (0.001–0.004 Hz, with 100 000 linearly spaced bins) allowing the code to pick the frequency with the highest power. We find that in observations on Days 37, 38 and 54 the periodogram detects significant power close to 0.002 Hz (i.e. ~ 500 s) while in observation on Day 24 no clear signal is detected at similar

¹https://astrowise.issdc.gov.in/astro_archive/archive/Home.jsp

²<https://heasarc.gsfc.nasa.gov/ftools/xselect/>

³<https://github.com/gulabd/UVITTools.jl>

⁴As implemented in ASTROPY.

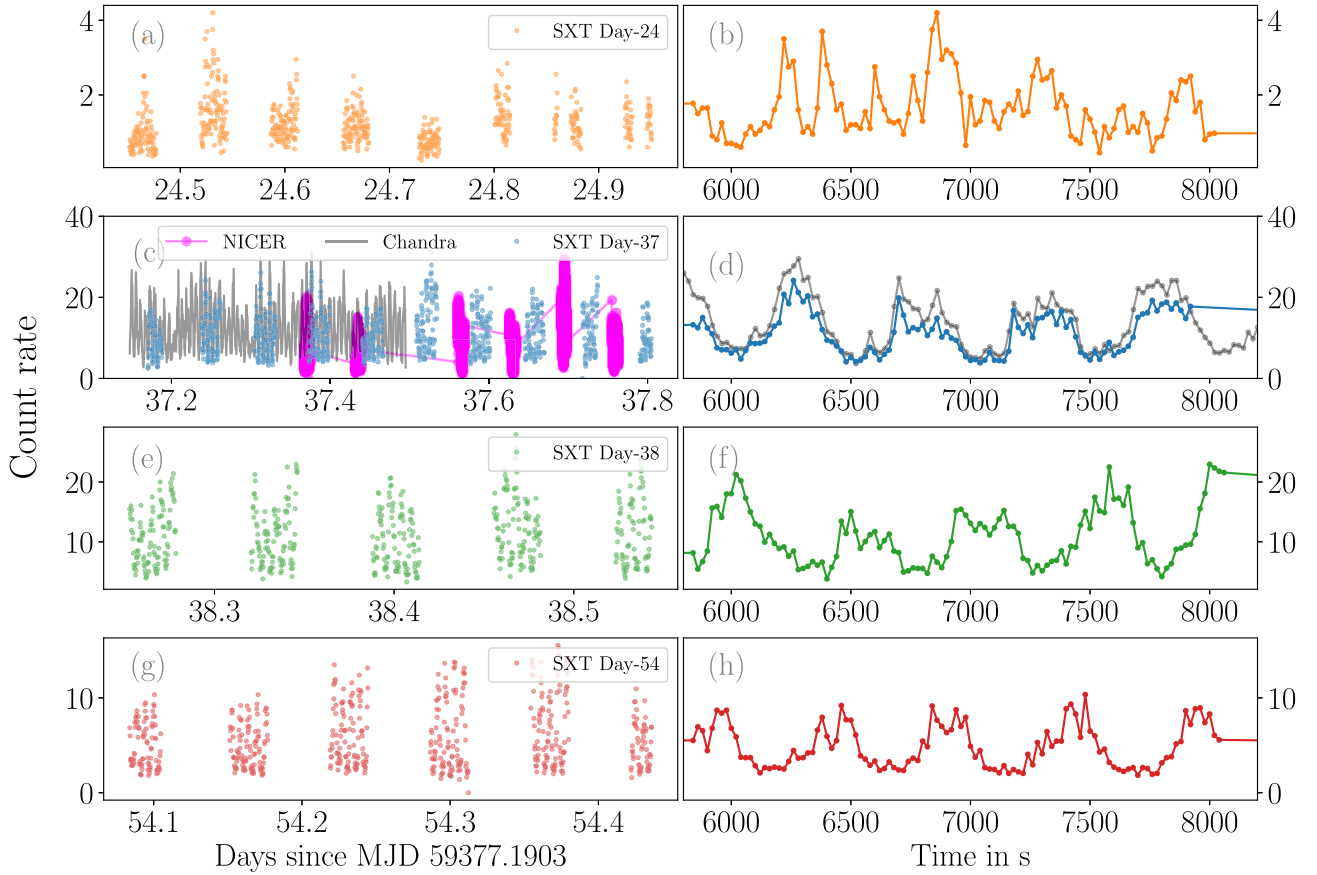


Figure 2. Soft X-ray light curves of different epochs of observation of V1674 Her. The light curves are extracted in the 0.35–2 keV energy range for SXT observations binned at 20 s. *NICER* observed the source contemporaneously with SXT observation on Day 37 (see Table 1) and the corresponding light curve is shown in magenta. The *NICER* count rates have been divided by 100 to compare the variations in the different observations. *Chandra* also observed the source (Drake et al. 2021) with a significant overlap with SXT observation which is shown as the grey solid line. Right panels [(b), (d), (f), (h)] show the light curves at different epochs for a single *AstroSat* orbit (the second orbit in the left panels). Observations on Days 37, 38, and 54 after source detection show clear periodic variation with differences evident across consecutive pulses.

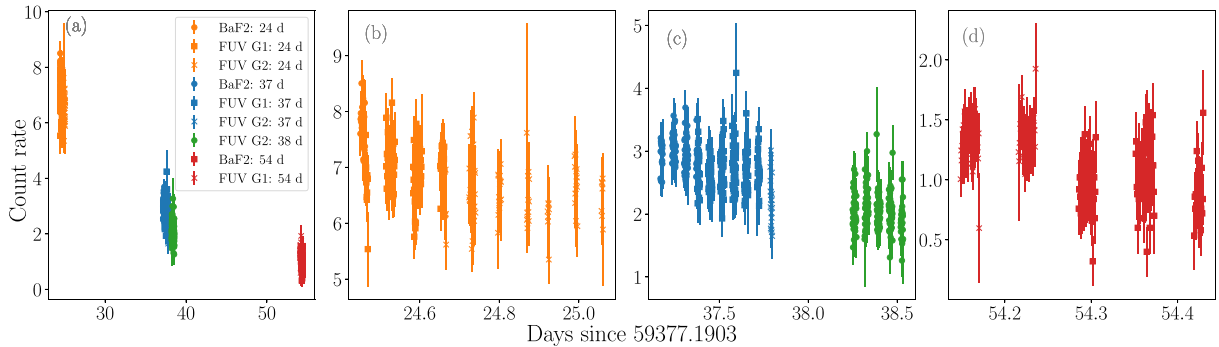


Figure 3. UV light curves as seen by *AstroSat*-UVIT. The light curves are binned at 50 s. Panel a shows the evolution of the source in UV wavelengths as the outburst progresses, while panels b, c, and d show a close-up of the light curves at each of the three epochs.

frequency. The periodograms for SXT observations are shown in Fig. 4. The x -axis is converted to period (measured in seconds) for clarity. The additional peaks detected in the periodogram are alias peaks arising due to windowing and data gaps present in the *AstroSat* observations.

The observation on Day 37 was contemporaneous with *Chandra* and *NICER* observations. The overlap of the observations is shown in Fig. 2. The *NICER* observation (OBSID: 4202260107) typically cov-

ered some of the data gaps in the *AstroSat* observation. To compare the period detection in SXT, *Chandra*, and *NICER*, we computed similar periodograms using *Chandra* and *NICER* observations that are also shown in Fig. 4. We report the period observed in the SXT observations in Table 2. We determine the statistical uncertainty in the period by using the method described in the Appendix.

The phase-folded light curves for different observations are shown in Fig. 5. The light curves are folded at the period suggested by Drake

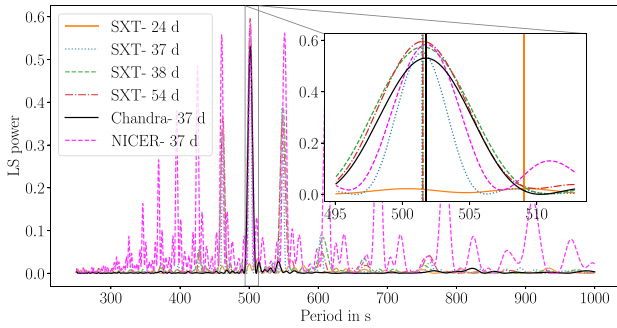


Figure 4. LS periodogram of V1674 Her in soft X-rays. The colour scheme of the periodograms is kept similar to Fig. 1 and the legend indicates the number of days passed since the source detection. The periodogram for *NICER* observation which was contemporaneous with observation on Day 37 is shown in magenta. The inset shows the periodogram close to 501 s with vertical lines highlighting the peak positions.

Table 2. Detected period from the LS periodogram from *AstroSat*-SXT observations. The errorbars reported correspond to the standard deviation of the periods measured from the simulated light curves as described in the Appendix.

Observation day	Period
Day 37	501.44 ± 0.01
Day 38	501.53 ± 0.05
Day 54	501.52 ± 0.04

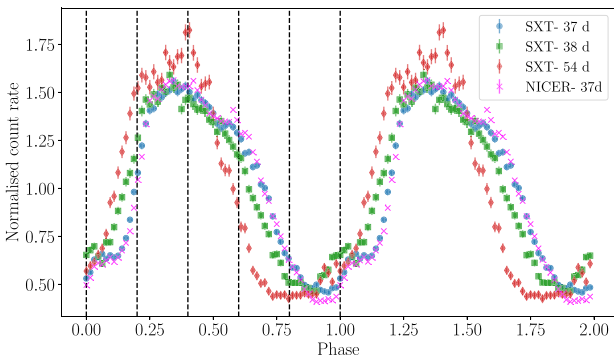


Figure 5. Phase-folded light curves for different SXT observations and *NICER* observation which is contemporaneous with observation on Day 37. The light curves were folded with phase 0.0 corresponding to MJD 59414.00115 and the 501.7 s period suggested by Drake et al. (2021). The light curves are normalized to indicate the pulse profile and two intervals of the period are shown for clarity. The intervals for the pulse-resolved spectral analysis are shown as dashed lines in the first pulse.

et al. (2021) and with a common epoch of MJD 59414.00115. The phase-folded light curve of contemporaneous *NICER* observation is also plotted for comparison.

The measured pulse periods in different SXT observations and in contemporaneous *Chandra* and *NICER* observations are statistically different. The period seen in V1674 Her is ~ 501 s which is only a factor of 4 less than the typical continuous exposure in SXT while in *NICER* observations (analysed here and in Orio et al. 2022) it

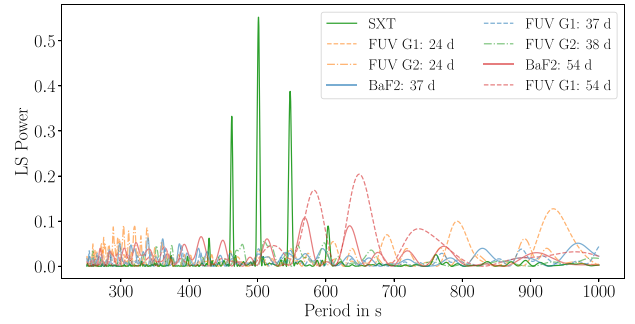


Figure 6. LS periodograms computed for individual UV observations. The colour scheme of the figure is kept consistent with Fig. 3. The LS periodogram from SXT-38 d is also shown for reference.

is of similar duration. Due to variations in the individual pulses, the accurate determination of the period may also depend on the duration of the continuous exposure and an accurate determination of the time of arrival of individual pulses. We tested the effect of various sampling windows on period determination using the LS technique. We sampled the *Chandra* light curve with a window function corresponding to typical data gaps and continuous exposures as seen in SXT and *NICER* observations. The period determined using the LS technique on the sampled light curve is also significantly different⁵ from the period determined from the complete light curve. The periodogram constructed from the *Chandra* observation sampled in the exact simultaneous interval as SXT-37 d observation shows a period identical to the SXT observation.

The UV light curves do not indicate any periodicity close to 500 s. We quantify this by computing the LS periodogram in a similar frequency range as in Fig. 4. The periodograms computed for the UV observations are shown in Fig. 6. The periodograms do not show a significant peak close to 501 s and the highest peak observed in the current frequency range for any UV observation has a false alarm probability $\gtrsim 50$ per cent (in comparison the false alarm rate in case of SXT observations is $\lesssim 10^{-4}$)⁶ and UV observations at nearby times (e.g. BaF2 or FUV-G1 on Day 54) do not show similar peaks in their periodograms. Thus, we conclude that the power seen in the UVIT LS periodograms is not intrinsic to the source but arises due to Poisson variation.

To place upper limits on the detectable pulse fraction (peak to trough pulse fraction = $[\text{maximum flux} - \text{minimum flux}] / [\text{maximum flux} + \text{minimum flux}]$ as defined in Dhillon et al. 2009) in current UV observations, we simulated 500 light curves with similar noise statistics as the current observations and injected sinusoidal counts of varying pulse fractions. The noise realizations were computed by sampling the light curve for each time bin from a Poisson distribution with a mean defined by the counts in that bin. LS periodograms were computed from the light curve corresponding to each pulse fraction and the noise realization in the frequency range of 0.001–0.004 Hz and false alarm probability was determined for the highest peak in each periodogram (irrespective of the difference between the period of the highest peak and the injected period). Assuming a conservative

⁵The statistical uncertainty on the period is typically 0.01–0.05 s while the differences in the period is 0.3 s.

⁶The false alarm probabilities in the paper are estimated for the same range of frequencies in which the periodogram is computed using the approach suggested by Baluev (2008) and implemented in ASTROPY.

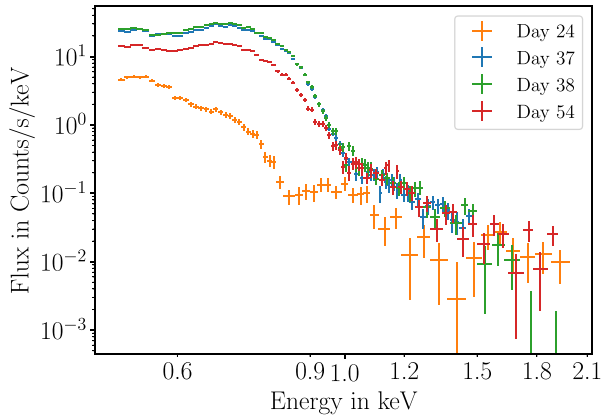


Figure 7. Pulse averaged X-ray spectrum for each epoch. The colour scheme has been kept identical to Fig. 1.

limit of false alarm probability of 0.01⁷, for a detection of injected pulsations, we determine a corresponding upper limit of 0.05 on the observable pulse fraction. Additionally, we estimate the LS power in an interval around the suggested optical period (0.153 d; Patterson et al. 2022) spanning a decade in the frequency and for 10 000 bins in the UV light curves to check if the UV light curves indicate any orbital modulation. We do not see any strong peak in the LS periodogram and the highest peak in that period interval is consistent with a false alarm probability of 0.99. Notably, the LS power around the orbital period is much lower than the typical LS power in Fig. 6 and thus a conservative upper limit on the orbital modulation is 0.05 (peak to trough pulse fraction).

4 SPECTRAL ANALYSIS

4.1 X-ray spectral analysis

Spectral analysis was carried out with XSPEC version 12.12.1 (Arnaud 1996) distributed with the HEASOFT package (version 6.30.1). We model the time-averaged spectrum to test the evolution of the source in X-rays. The time-averaged spectra at all the epochs are depicted in Fig. 7. Following the *Swift*-XRT analysis of Drake et al. (2021), we fit the spectra in the 0.5–2 keV range with a combination of a thermal blackbody (`tbabs`) and multiple absorption edges (`edge`). In case of the SXT observation on Day 24.5, the flux was low and thus the spectrum beyond 1 keV was dominated by background. We therefore restrict our modelling to 0.5–1 keV. We also applied a neutral H absorption (`tbabs`) with a fixed column density of $2.9 \times 10^{21} \text{ cm}^{-2}$ (Drake et al. 2021) with abundances from Asplund et al. (2009) and cross-sections from Verner et al. (1996). The parameters of the fits are reported in Table 3. We find that the absorption edges are at 0.61 keV (N VII), 0.77 keV (O VII), 0.87 keV (O VIII), 0.96 keV (F VIII), 1.14 keV (F IX/Ne IX) and 1.38 keV (Ne X). The edge identification is done based on the reports from Drake et al. (2021) and the Atomic Database.⁸ We note that not all edges are required to describe the fainter spectra due to lack of statistics.

The clear pulse evolution motivated us to investigate the variation of the spectral properties as a function of the pulse profile. We divided

the pulse profile into five equal phase bins (see Fig. 5 for the bin edges) and extracted the corresponding GTIs for observations on Day 37, 38, and 54. The corresponding phase-resolved spectra were extracted using `xselect`. To highlight the differences in the spectra of individual pulse phases, we plot the ratio of the pulse phase-resolved spectra to the phase 0.8–1.0 for the observation on Day 37 in the Fig. 8. The pulse-phase-resolved spectra were modelled similar to the time-averaged spectra and the parameters of the fits are reported in Table 3. We note that the minor fluctuations in the edge energies or the blackbody temperature ($\approx 20 \text{ eV}$) may not be real as they can be caused by variations in the bias voltage of detector. We depict the pulse phase dependence of the blackbody component in Fig. 9 and of the optical depth of various edges in Fig. 10.

4.2 UV spectral analysis

The UV spectra for all the epochs show clear emission features. We model these features with narrow Gaussian functions and include a blackbody component to model the continuum. The full width at half-maximum (FWHM) is estimated from the brightest features, and assumed to be the same for all the other features. The typical observed width is close to the grating resolution. We identify the observed narrow features in the spectra with emission lines from various elements as suggested by Vanlandingham, Starrfield & Shore (1997). The UV spectra for each epoch are shown in Fig. 11 with identified emission features indicated as vertical lines. The line flux of these features are noted in Table 4. The strongest emission features (N IV and C IV) are seen in all observations, while some of the faint features are only seen at brighter epoch or in observations with both gratings. As the source UV flux decreases across different observations, we find that the line fluxes are also decreasing.

5 RESULTS AND DISCUSSION

We observed the nova V1674 Her during the supersoft phase with *AstroSat* in X-ray and UV wavelengths and have conducted a detailed spectral and timing study of the source.

5.1 Pulsations in the source

The X-ray observations of the source have shown a strong pulse profile after the peak of the SSS phase and which is also visible even 10 months after the initial eruption (Page et al. 2022). We estimate that the pulse period of the source is 501.44–501.53 s (Table 2) which is statistically different from the estimates using *Chandra* (Drake et al. 2021) and *NICER* (Orio et al. 2022). Since there are considerable simultaneous observations of the source, we sampled the *Chandra* observation at SXT observation windows and computed the LS periodogram that matches the SXT period, and shifting the sampling window resulted in an intermediate period indicating that for this source, the periodogram is sensitive to the sampling window as the size of the sampling window is similar to the period. Additionally, the individual pulses are quite different causing a strong dependence on which pulse is sampled and at what phase. Thus, we note that the uncertainty in the period may be dominated by the sampling of the source activity and the typical uncertainty estimation techniques (used by Drake et al. 2021, and outlined in the Appendix) fail to incorporate the intrinsic variability of the individual pulses and the deviation of the pulse phase from a sinusoid function. The difference in the observed period is an artifact of the subset of the pulses being observed and thus a continuous observation (e.g.

⁷In the absence of a periodic signal in the light curve, the observed LS power is expected 1 per cent of the time.

⁸AtomDB, <http://www.atomdb.org/Webguide/webguide.php?z1=0&z0=7>

Table 3. Spectral parameters for time-averaged and pulse phase resolved analysis at different epochs of the outburst.

Component	Parameter	Unit	Time averaged	Pulse phase				
				0–0.2	0.2–0.4	0.4–0.6	0.6–0.8	0.8–1
Day 24								
Blackbody	kT	keV	0.118 ^{+0.009} _{-0.008}	–	–	–	–	–
	Norm		0.022 ^{+0.001} _{-0.001}	–	–	–	–	–
Edge	E	keV	0.611 ^{+0.002} _{-0.002}	–	–	–	–	–
	τ		1.8 ^{+0.2} _{-0.2}	–	–	–	–	–
Edge	E	keV	0.722 ^{+0.005} _{-0.007}	–	–	–	–	–
	τ		1.9 ^{+0.4} _{-0.4}	–	–	–	–	–
Edge	E	keV	0.793 ^{+0.008} _{-0.008}	–	–	–	–	–
	τ		4.6 ^{+0.4} _{-0.4}	–	–	–	–	–
	χ^2/dof		56.5/31	–	–	–	–	–
Day 37								
Blackbody	kT	keV	0.111 ^{+0.001} _{-0.001}	0.114 ^{+0.003} _{-0.002}	0.112 ^{+0.002} _{-0.002}	0.115 ^{+0.002} _{-0.002}	0.113 ^{+0.002} _{-0.002}	0.110 ^{+0.003} _{-0.002}
	Norm		0.103 ^{+0.002} _{-0.002}	0.083 ^{+0.003} _{-0.002}	0.161 ^{+0.004} _{-0.004}	0.142 ^{+0.003} _{-0.003}	0.096 ^{+0.003} _{-0.003}	0.054 ^{+0.002} _{-0.002}
Edge	E	keV	0.770 ^{+0.002} _{-0.003}	0.749 ^{+0.004} _{-0.004}	0.773 ^{+0.003} _{-0.003}	0.772 ^{+0.003} _{-0.004}	0.764 ^{+0.004} _{-0.004}	0.758 ^{+0.006} _{-0.006}
	τ		0.87 ^{+0.03} _{-0.04}	0.84 ^{+0.06} _{-0.06}	0.89 ^{+0.05} _{-0.05}	0.94 ^{+0.05} _{-0.05}	0.84 ^{+0.05} _{-0.05}	0.70 ^{+0.07} _{-0.07}
Edge	E	keV	0.869 ^{+0.003} _{-0.003}	0.848 ^{+0.005} _{-0.005}	0.866 ^{+0.003} _{-0.004}	0.869 ^{+0.003} _{-0.004}	0.867 ^{+0.004} _{-0.005}	0.859 ^{+0.008} _{-0.010}
	τ		2.4 ^{+0.1} _{-0.1}	1.8 ^{+0.2} _{-0.2}	2.6 ^{+0.3} _{-0.3}	2.6 ^{+0.2} _{-0.2}	2.0 ^{+0.2} _{-0.2}	1.3 ^{+0.3} _{-0.3}
Edge	E	keV	0.957 ^{+0.004} _{-0.005}	0.934 ^{+0.006} _{-0.007}	0.947 ^{+0.009} _{-0.010}	0.958 ^{+0.007} _{-0.007}	0.949 ^{+0.008} _{-0.008}	0.920 ^{+0.012} _{-0.013}
	τ		3.6 ^{+0.2} _{-0.1}	3.9 ^{+0.5} _{-0.5}	3.3 ^{+0.3} _{-0.3}	4.0 ^{+0.3} _{-0.3}	3.4 ^{+0.3} _{-0.3}	2.2 ^{+0.3} _{-0.4}
Edge	E	keV	1.139 ^{+0.012} _{-0.009}	1.06 ^{+0.03} _{-0.03}	1.10 ^{+0.02} _{-0.02}	1.16 ^{+0.01} _{-0.01}	1.09 ^{+0.02} _{-0.02}	1.03 ^{+0.02} _{-0.02}
	τ		2.2 ^{+0.2} _{-0.2}	1.6 ^{+0.5} _{-0.5}	1.9 ^{+0.2} _{-0.2}	2.2 ^{+0.3} _{-0.2}	1.9 ^{+0.4} _{-0.3}	2.2 ^{+0.4} _{-0.4}
Edge	E	keV	1.38 ^{+0.02} _{-0.02}	1.21 ^{+0.02} _{-0.02}	1.33 ^{+0.02} _{-0.02}	1.46 ^{+0.53} _{-0.03}	1.28 ^{+0.02} _{-0.02}	1.21 ^{+0.03} _{-0.02}
	τ		2.0 ^{+0.3} _{-0.3}	4.1 ^{+1.0} _{-0.8}	2.1 ^{+0.4} _{-0.3}	2.7 ^{+1.4} _{-0.7}	3.0 ^{+0.8} _{-0.6}	3.7 ^{+1.2} _{-0.8}
	χ^2/dof		221.2/82	88.5/44	113/52	95.1/50	66.4/47	79.0/44
Day 38								
Blackbody	kT	keV	0.115 ^{+0.002} _{-0.002}	0.117 ^{+0.004} _{-0.004}	0.122 ^{+0.003} _{-0.003}	0.117 ^{+0.003} _{-0.002}	0.114 ^{+0.003} _{-0.002}	0.116 ^{+0.005} _{-0.004}
	Norm		0.104 ^{+0.002} _{-0.002}	0.069 ^{+0.003} _{-0.003}	0.131 ^{+0.004} _{-0.004}	0.151 ^{+0.004} _{-0.004}	0.118 ^{+0.004} _{-0.004}	0.055 ^{+0.003} _{-0.003}
Edge	E	keV	0.766 ^{+0.003} _{-0.003}	0.747 ^{+0.005} _{-0.005}	0.750 ^{+0.005} _{-0.005}	0.768 ^{+0.004} _{-0.004}	0.771 ^{+0.006} _{-0.005}	0.76 ^{+0.01} _{-0.01}
	τ		0.91 ^{+0.05} _{-0.04}	0.93 ^{+0.09} _{-0.09}	0.88 ^{+0.08} _{-0.08}	0.99 ^{+0.06} _{-0.06}	0.83 ^{+0.07} _{-0.07}	0.7 ^{+0.1} _{-0.2}
Edge	E	keV	0.863 ^{+0.003} _{-0.003}	0.85 ^{+0.01} _{-0.01}	0.840 ^{+0.006} _{-0.006}	0.869 ^{+0.003} _{-0.004}	0.868 ^{+0.005} _{-0.006}	0.84 ^{+0.02} _{-0.02}
	τ		2.2 ^{+0.2} _{-0.2}	1.6 ^{+0.6} _{-0.6}	1.9 ^{+0.2} _{-0.2}	3.2 ^{+0.3} _{-0.3}	2.4 ^{+0.3} _{-0.3}	1.1 ^{+0.4} _{-0.3}
Edge	E	keV	0.944 ^{+0.007} _{-0.006}	0.92 ^{+0.02} _{-0.02}	0.922 ^{+0.009} _{-0.009}	0.96 ^{+0.01} _{-0.01}	0.95 ^{+0.01} _{-0.01}	0.92 ^{+0.02} _{-0.02}
	τ		3.2 ^{+0.2} _{-0.2}	2.6 ^{+0.5} _{-0.6}	3.7 ^{+0.4} _{-0.4}	2.9 ^{+0.4} _{-0.4}	3.0 ^{+0.4} _{-0.4}	3.3 ^{+0.4} _{-1.5}
Edge	E	keV	1.08 ^{+0.01} _{-0.01}	–	1.06 ^{+0.02} _{-0.02}	1.14 ^{+0.02} _{-0.02}	1.11 ^{+0.04} _{-0.02}	–
	τ		2.1 ^{+0.2} _{-0.2}	–	2.6 ^{+0.5} _{-0.5}	2.234 ^{+0.4} _{-0.4}	2.0 ^{+1.0} _{-0.4}	–
Edge	E	keV	1.28 ^{+0.01} _{-0.01}	–	1.26 ^{+0.04} _{-0.02}	1.41 ^{+0.04} _{-0.02}	1.29 ^{+0.20} _{-0.04}	–
	τ		4.1 ^{+0.8} _{-0.6}	–	3.1 ^{+0.8} _{-0.6}	4.1 ^{+5.8} _{-1.1}	2.3 ^{+0.9} _{-1.2}	–
	χ^2/dof		130.21/67	30.7/36	54.5/40	50.2/42	31.9/40	38.8/35
Day 54								
Blackbody	kT	keV	0.107 ^{+0.002} _{-0.001}	0.098 ^{+0.003} _{-0.003}	0.107 ^{+0.003} _{-0.003}	0.117 ^{+0.003} _{-0.003}	0.109 ^{+0.003} _{-0.003}	0.104 ^{+0.004} _{-0.004}
	Norm		0.064 ^{+0.002} _{-0.002}	0.041 ^{+0.003} _{-0.003}	0.084 ^{+0.004} _{-0.004}	0.096 ^{+0.003} _{-0.003}	0.068 ^{+0.003} _{-0.003}	0.030 ^{+0.002} _{-0.002}
Edge	E	keV	0.759 ^{+0.002} _{-0.003}	0.755 ^{+0.007} _{-0.007}	0.748 ^{+0.007} _{-0.008}	0.761 ^{+0.004} _{-0.004}	0.756 ^{+0.006} _{-0.006}	0.757 ^{+0.006} _{-0.008}
	τ		1.08 ^{+0.05} _{-0.05}	1.0 ^{+0.1} _{-0.1}	0.9 ^{+0.1} _{-0.1}	1.21 ^{+0.08} _{-0.08}	0.9 ^{+0.1} _{-0.1}	0.9 ^{+0.1} _{-0.1}
Edge	E	keV	0.859 ^{+0.003} _{-0.003}	0.86 ^{+0.02} _{-0.02}	0.830 ^{+0.009} _{-0.009}	0.858 ^{+0.004} _{-0.005}	0.852 ^{+0.006} _{-0.006}	0.869 ^{+0.007} _{-0.012}
	τ		2.1 ^{+0.1} _{-0.1}	1.2 ^{+0.3} _{-0.3}	1.7 ^{+0.2} _{-0.2}	2.9 ^{+0.2} _{-0.2}	2.28 ^{+0.26} _{-0.26}	1.43 ^{+0.24} _{-0.27}
Edge	E	keV	0.963 ^{+0.004} _{-0.005}	0.95 ^{+0.02} _{-0.02}	0.929 ^{+0.008} _{-0.008}	0.98 ^{+0.01} _{-0.01}	0.96 ^{+0.01} _{-0.01}	0.97 ^{+0.01} _{-0.02}
	τ		3.0 ^{+0.2} _{-0.1}	2.9 ^{+0.5} _{-0.6}	3.7 ^{+0.3} _{-0.3}	3.3 ^{+0.3} _{-0.3}	2.8 ^{+0.3} _{-0.3}	2.1 ^{+1.0} _{-0.4}
Edge	E	keV	1.20 ^{+0.01} _{-0.01}	1.25 ^{+0.07} _{-0.12}	1.17 ^{+0.02} _{-0.02}	1.19 ^{+0.02} _{-0.02}	1.18 ^{+0.02} _{-0.02}	1.12 ^{+0.17} _{-0.02}
	τ		2.5 ^{+0.3} _{-0.2}	1.1 ^{+1.3} _{-0.6}	2.8 ^{+0.7} _{-0.5}	3.2 ^{+0.6} _{-0.5}	2.6 ^{+0.6} _{-0.5}	1.4 ^{+0.6} _{-0.6}
	χ^2/dof		145.35/71	30.6/37	74.6/40	74.9/41	38.96/40	43.1/37

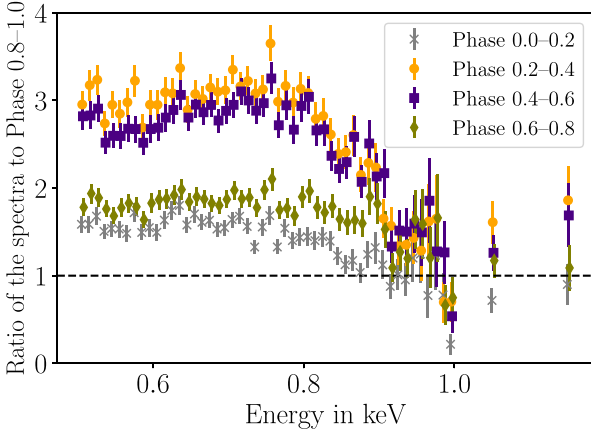


Figure 8. The ratio of the pulse phase resolved spectra with that of the pulse phase (0.8–1.0) to highlight the differences in pulse phase spectra in a model independent manner. The pulse-phase resolved spectra for this figure are extracted from the observation on Day 37 after the detection of the source.

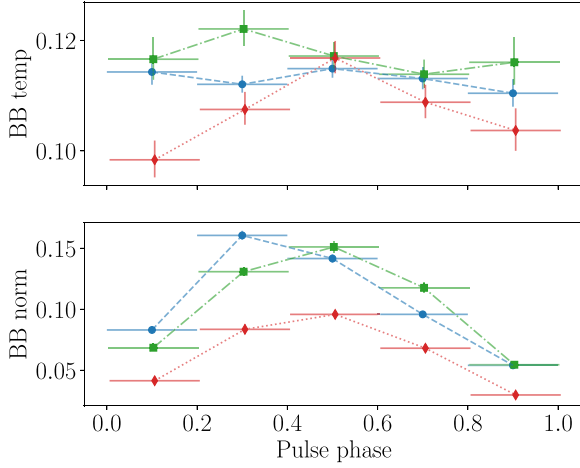


Figure 9. Evolution of the blackbody component as a function of the pulse phase. The points have been shifted in phase slightly to show the extent of 1σ confidence intervals correctly. The colour scheme denoting the different observations is kept identical to that of Fig. 1.

Chandra observation) is paramount to estimate the *true* period of the source.

The UV observations do not show pulsations at the period seen in X-rays (see Fig. 6). To verify if this is due to lack of UV sensitivity or due to inherent lack of pulsations, we simulated UV light curves and injected pulsations at various strengths (relative to the mean count rate). We find that our light curves are sensitive to detect a pulse fraction of 0.05 for a conservative false alarm probability of 1 per cent. Thus we conclude that UV pulsations are weaker than 0.05 (the X-ray pulsations are roughly 0.5–0.6 at a similar epoch). The optical observations in Patterson et al. (2022) indicate that the pulse fraction for the 501.4 s modulation evolves from 0.005 on Day 12 to 0.04 on Day 350 (0.01 mag at $V = 12$ –0.09 mag at $V = 17$ converted to the peak to trough pulse fraction).

The X-ray pulsations are observed strongly after the peak of the SSS phase (both in our analysis and Drake et al. 2021) while the

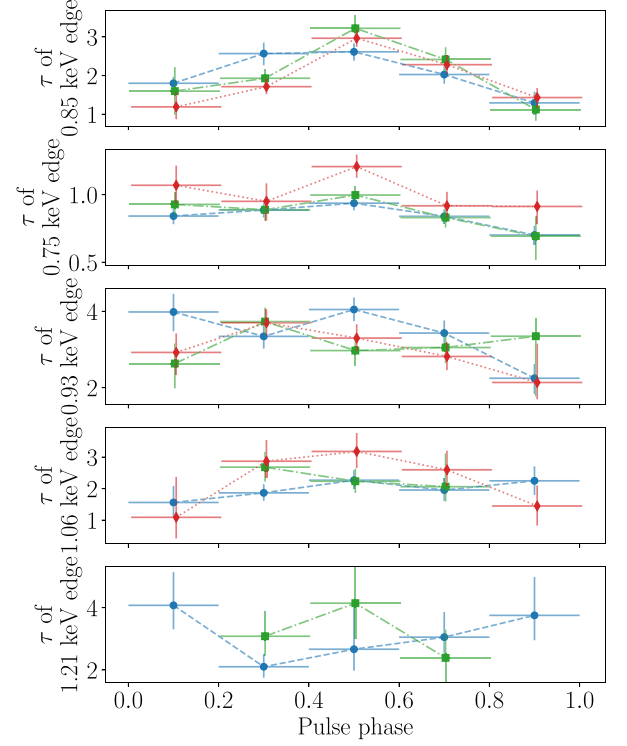


Figure 10. Evolution of the optical depth of the various edges seen in the source as a function of the pulse phase. The points have been shifted in phase slightly to show the extent of 1σ confidence intervals correctly. The colour scheme is kept identical to that of Fig. 1.

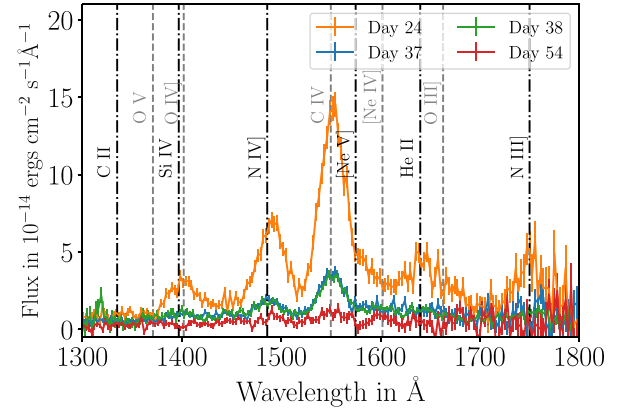


Figure 11. UV spectra for different epochs of observations. The identified emission lines (also noted in Table 4) are marked as vertical dashed/dot-dashed lines to guide the eye.

optical modulations are observed as early as Day 12 of the eruption (Patterson et al. 2022). The continuation of the X-ray modulations in the quiescence period strongly indicates that they are due to the hotter regions on the polar caps and that the observed periodicity is likely due to the rotation period of an intermediate polar. However, the modulation observed in outburst is of such amplitude and at such high luminosity that it cannot be solely due to accretion. While the reason for the non-detection of the pulsations in the UV is not very clear,

Table 4. Fluxes of the emission features seen in the UV spectra at various epochs.

Spectral line	Observed wavelength (Å)	Flux (10^{-13} erg cm $^{-2}$ s $^{-1}$)			
		Day 24	Day 37	Day 38	Day 54
C II (1335)	1325	–	1.40	–	–
O V (1371)	1363	–	0.90	–	–
Si IV/O IV] (1402)	1389	13.4	2.98	3.03	–
Unidentified	1448	3.10	2.13	1.45	0.98
N IV] (1486)	1490	20.9	6.73	5.69	2.04
C IV (1549)	1551	42.4	12.2	10.4	3.72
[Ne V] (1575)	1588	11.8	3.44	3.23	1.81
[Ne IV] (1602)					
He II (1640)	1645	13.9	5.02	3.85	–
O III] (1665)	1670	7.14	–	–	–
N III] (1750)	1753	11.4	4.42	1.83	–

Note. Typical uncertainty in the flux estimates is 20–30 per cent.

one possibility could be a significant smearing of the modulation due to flickering caused by a re-accretion process. Based on the X-ray and UV timing analysis, we can conclude that the WD atmosphere (the typical source of the X-ray emission) is inhomogeneous and is modulated with the rotation period of the WD, while the UV emission is not significantly modulated at the same time, perhaps, indicating a distinct origin of the UV emission.

5.2 Evolution of the spectrum

The source emission in X-rays can be primarily described as a blackbody component with multiple absorption edges. We detect a relatively hotter blackbody (as compared to Drake et al. 2021; Orio et al. 2022). Across the three epochs after the peak of the SSS phase, the temperature is found to be roughly constant. The normalization of the blackbody (indicative of the size of the emission region) follows the trend suggested by the SSS evolution.

The UV spectra of the source indicate an evolution distinct from the X-ray evolution. Throughout the SSS phase, the UV flux is observed to decrease, which is also seen in the evolution of individual emission features. Some of the fainter features are not observed in later observations possibly due to the lack of statistics. The decrease in the UV distinct from the development of the soft X-ray flux indicates the UV fluxes originate in a region different from the soft X-rays, most likely the inner regions of the nova ejecta.

5.3 Evolution of optical depth as a function of the pulse phase

Noting a clear evolution of the X-ray spectrum as a function of the pulse phase (see Fig. 8 for a model-independent depiction of the same), we conducted a pulse phase-resolved spectral study to investigate the dependence of the spectral parameters as a function of the pulse phase. We find that the pulse variation of the flux can be characterized as the variation in the normalization of the blackbody component (and thus the area of the emitting region). Our spectral modelling leads to the incorporation of a few X-ray absorption edges to bring the χ^2 closer to acceptable values. Additionally, we find a marginal evidence of variation of the optical depth of the observed edges as a function of the pulse phase. The presence of absorption edges in the low-resolution SXT spectra may, however, be compromised by the complexity of the model with large number of components used here and would require higher resolution X-ray spectra for confirmation in future observations of such novae.

6 CONCLUSIONS

Our analysis of nearly simultaneous soft X-ray and FUV observations of V1674 Her confirms the presence of a 501.4–501.5 s period in the X-rays at the peak of the SSS phase. However, no periodicity is detected in the FUV. The shape of the phase-folded X-ray light curves varies from one epoch to another across the three epochs observed during the peak of the SSS phase. We also report the presence of absorption features in the X-rays, and strong line emission features identified with Si, N, and O in the FUV. The non-detection of the ~ 501 s modulation in UV wavelengths and the disjoint evolution of FUV and X-ray fluxes during the period of our observations, indicate the FUV and X-ray emissions most likely arise from different regions.

FACILITIES

AstroSat, NICER, Chandra.

ACKNOWLEDGEMENTS

We thank the ISRO for scheduling the observations and the Indian Space Science Data Centre (ISSDC) for making the data available. This work has been performed utilizing the calibration data bases and auxiliary analysis tools developed, maintained and distributed by *AstroSat*-SXT team with members from various institutions in India and abroad and the SXT Payload Operation Center (POC) at the TIFR, Mumbai for the pipeline reduction. This publication uses UVIT data processed by the payload operations center at IIA. The UVIT is built in collaboration between IIA, IUCAA, TIFR, ISRO, and CSA. The work has also made use of software, and/or web tools obtained from NASA's High Energy Astrophysics Science Archive Research Center (HEASARC), a service of the Goddard Space Flight Center and the Smithsonian Astrophysical Observatory. Kulinder Pal Singh thanks the Indian National Science Academy for support under the INSA Senior Scientist Programme. G. J. M. Luna is a member of CIC-CONICET (Argentina) and acknowledge support from grant ANPCYT-PICT 0901/2017. J. J. Drake was funded by NASA contract NAS8-03060 to the *Chandra* X-ray Center and thanks the Director, Pat Slane, for continuing advice and support. This work made use of *ASTROPY*:⁹ a community-developed core Python package and an ecosystem of tools and resources for astronomy (Astropy Collaboration 2013, 2018, 2022).

⁹<http://www.astropy.org>

DATA AVAILABILITY

AstroSat observations are available at https://astrobrowse.issdc.gov.in/astro_archive/archive/Home.jsp. The observations can be searched for using the observation IDs mentioned in Table 1.

REFERENCES

- Albanese I., Farina A., Andreoli V., Ochner P., Reguitti A., 2021, *Astron. Telegram*, 14718, 1
- Antia H. M. et al., 2021, *JA&A*, 42, 32
- Arnaud K. A., 1996, in Jacoby G. H., Barnes J., eds, *ASP Conf. Ser. Vol. 101, Astronomical Data Analysis Software and Systems V*. Astron. Soc. Pac., San Francisco, p. 17
- Asplund M., Grevesse N., Sauval A. J., Scott P., 2009, *ARA&A*, 47, 481
- Astropy Collaboration, 2013, *A&A*, 558, A33
- Astropy Collaboration, 2018, *AJ*, 156, 123
- Astropy Collaboration, 2022, *ApJ*, 935, 167
- Aydi E. et al., 2021, *Astron. Telegram*, 14710, 1
- Baluev R. V., 2008, *MNRAS*, 385, 1279
- Chomiuk L., Metzger B. D., Shen K. J., 2021, *ARA&A*, 59, 391
- Della Valle M., Izzo L., 2020, *A&AR*, 28, 3
- Dewangan G. C., 2021, *JA&A*, 42, 49
- Dhillon V. S. et al., 2009, *MNRAS*, 394, L112
- Drake J. J. et al., 2021, *ApJ*, 922, L42
- Habtie G. R., Ramkrishna D., Pandey R., Ashok N. M., Dubovsky P. A., 2024, *MNRAS*, 527, 1405
- Hansen K. Y. et al., 2021, *Res. Notes Am. Astron. Soc.*, 5, 244
- Kawash A. et al., 2021, *ApJ*, 910, 120
- Kuin P., Starrfield S., Orio M., Page K., 2021, *Astron. Telegram*, 14736, 1
- Kumar S., Dewangan G. C., Singh K. P., Gandhi P., Papadakis I. E., Tripathi P., Mallick L., 2023, *ApJ*, 950, 90
- Li K.-L., 2021a, *Astron. Telegram*, 14705, 1
- Li K.-L., 2021b, *Astron. Telegram*, 14707, 1
- Lin L. C.-C., Fan J.-L., Hu C.-P., Takata J., Li K.-L., 2022, *MNRAS*, 517, L97
- Lomb N. R., 1976, *Ap&SS*, 39, 447
- Luna G. J. M., Lima I. J., Orio M., 2023, preprint ([arXiv:2310.02220](https://arxiv.org/abs/2310.02220))
- Maccarone T. J., Beardmore A., Mukai K., Page K., Pichardo Marcano M., Rivera Sandoval L., 2021, *Astron. Telegram*, 14776, 1
- Mroz P., Burdge K., Roestel J. v., Prince T., Kong A. K. H., Li K. L., 2021, *Astron. Telegram*, 14720, 1
- Munari U., Valisa P., Dallaporta S., 2021, *Astron. Telegram*, 14704, 1
- Ochner P., Andreoli V., Farina A., Reguitti A., 2021, *Astron. Telegram*, 14805, 1
- Orio M. et al., 2022, *ApJ*, 932, 45
- Özdönmez A., Ege E., Güver T., Ak T., 2018, *MNRAS*, 476, 4162
- Page K. L., Beardmore A. P., Starrfield S., Wagner R. M., Woodward C. E., 2022, *Astron. Telegram*, 15317, 1
- Page K. L., Orio M., Sokolovsky K. V., Kuin N. P. M., 2021, *Astron. Telegram*, 14747, 1
- Patterson J. et al., 2022, *ApJ*, 940, L56
- Patterson J., Epstein-Martin M., Vanmunster T., Kemp J., 2021, *Astron. Telegram*, 14856, 1
- Postma J. E., Leahy D., 2017, *PASP*, 129, 115002
- Quimby R. M., Shafter A. W., Corbett H., 2021, *Res. Notes Am. Astron. Soc.*, 5, 160
- Scargle J. D., 1982, *ApJ*, 263, 835
- Schwarzenberg-Czerny A., 2003, in Sterken C., ed., *ASP Conf. Ser. Vol. 292, Interplay of Periodic, Cyclic and Stochastic Variability in Selected Areas of the H-R Diagram*. Astron. Soc. Pac., San Francisco, p. 383
- Singh K. P. et al., 2014, *Proc. SPIE*, 9144, 91441S
- Singh K. P. et al., 2016, in den Herder J.-W. A., Takahashi T., Bautz M., eds, *Proc. SPIE Conf. Ser. Vol. 9905, Space Telescopes and Instrumentation 2016: Ultraviolet to Gamma Ray*. SPIE, Bellingham, p. 99051E
- Singh K. P. et al., 2017, *JA&A*, 38, 29
- Sokolovsky K. et al., 2021, *Astron. Telegram*, 14731, 1

- Sokolovsky K. V. et al., 2023, *MNRAS*, 521, 5453
- Starrfield S., Bose M., Iliadis C., Hix W. R., Woodward C. E., Wagner R. M., 2020, *ApJ*, 895, 70
- Starrfield S., Iliadis C., Timmes F. X., Hix W. R., Arnett W. D., Meakin C., Sparks W. M., 2012, *Bull. Astron. Soc. India*, 40, 419
- Tandon S. N. et al., 2017, *AJ*, 154, 128
- Tandon S. N. et al., 2020, *AJ*, 159, 158
- Vadawale S. V. et al., 2016, in den Herder J.-W. A., Takahashi T., Bautz M., eds, *Proc. SPIE Conf. Ser. Vol. 9905, Space Telescopes and Instrumentation 2016: Ultraviolet to Gamma Ray*. SPIE, Bellingham, p. 99051G
- VanderPlas J. T., 2018, *ApJS*, 236, 16
- VanderPlas J. T., Ivezić Ž., 2015, *ApJ*, 812, 18
- VanderPlas J., Connolly A. J., Ivezić Z., Gray A., 2012, *Proceedings of Conference on Intelligent Data Understanding (CIDU)*, 2012, 47
- Vanlandingham K. M., Starrfield S., Shore S. N., 1997, *MNRAS*, 290, 87
- Verner D. A., Ferland G. J., Korista K. T., Yakovlev D. G., 1996, *ApJ*, 465, 487
- Vogt N., 1990, *ApJ*, 356, 609
- Wagner R. M., Woodward C. E., Starrfield S., Banerjee D. P. K., Evans A., 2021, *Astron. Telegram*, 14746, 1
- Wang J., Gao C., Xin L. P., Wei J. Y., 2021, *Astron. Telegram*, 14737, 1
- Woodward C. E., Banerjee D. P. K., Geballe T. R., Page K. L., Starrfield S., Wagner R. M., 2021, *ApJ*, 922, L10
- Yadav J. S. et al., 2016, in den Herder J.-W. A., Takahashi T., Bautz M., eds, *Proc. SPIE Conf. Ser. Vol. 9905, Space Telescopes and Instrumentation 2016: Ultraviolet to Gamma Ray*. SPIE, Edinburgh, p. 99051D

APPENDIX: ESTIMATING THE UNCERTAINTY IN THE PERIOD FROM X-RAY OBSERVATIONS

To determine the uncertainty in the estimated period, we followed the procedure outlined here:

- (i) The given light curve is fitted with a sinusoid function to determine the best-fitting period.
- (ii) Using the best-fitting sinusoid parameters, we simulate 5000 light curves with exposure and total duration similar to the original light curve. The individual time stamps for the simulated light curve need not correspond to the time stamps of the original light curve. The count rate for each time stamp is determined using a sinusoid function as determined in step (i).
- (iii) Each flux point was randomized by including an uncertainty sampled from a Gaussian distribution.
- (iv) For each simulated light curve, we computed the LS periodogram and determined the position of the peak. The standard deviation of the periods is assumed to be the uncertainty in the period estimate.

We determined the distribution for all the X-ray observations which showed significant periodicity (namely, SXT-Day 37, SXT-Day 38, and SXT-Day 54 and NICER). The standard deviation of the distribution corresponds to 68 per cent uncertainty estimate. The distributions for different observations is shown in Fig. A1. Another important metric to estimate the lower limit on the uncertainty could be the Rayleigh criterion. The criterion encapsulates a typical error introduced if one period is missed/extra in counting the number of periods between two epochs. In the present case, the maximum separation between two epochs with detected period is $54 - 37 = 17$ d. Corresponding to a rough period of 501.7 s, we have 2927 cycles between the two epochs, and thus, the expected error from the Rayleigh's criterion is $\approx 501.7 \times 1/2927 = 0.17$ s. This error does not incorporate the signal-to-noise ratio and therefore may be a overestimation of the lower limit (Schwarzenberg–Czerny 2003).

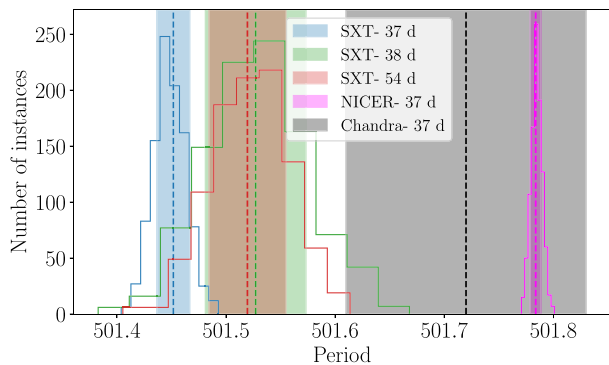


Figure A1. Distribution of the period estimates from the simulated light curves. Vertical dashed lines indicate the period derived from the LS periodogram of the observations and the shaded region represents the standard deviation of the distributions.

This paper has been typeset from a $\text{\TeX}/\text{\LaTeX}$ file prepared by the author.